



WHERE THE FOREST MEETS THE PRAIRIE

Todd County

● MINNESOTA ● EST. 1855 ●

SOIL AND WATER CONSERVATION DISTRICT

215 1st Avenue South, Suite 104

Long Prairie, MN 56347

Phone: 320-732-2644 Fax: 320-732-4803

Todd County Soil and Water Conservation District Board of Supervisors Agenda

*The Todd SWCD Board of Supervisors will be holding a meeting of SWCD Board of Supervisors on Thursday, November 13, 2025 beginning at 8:30 am in person at **25537 County Road 62, Browerville MN 56438 (Formerly Horseshoe)***

Agenda Item

Presenter

1. Routine Business

- | | |
|--|-------------|
| 1.1. Call to Order | Chairperson |
| 1.2. Pledge of Allegiance | Chairperson |
| 1.3. Call for Introductions | Chairperson |
| 1.4. Act on Approving the Agenda | Chairperson |
| 1.5. Act on Approving Minutes from October 9, 2025 Board Meeting | Secretary |
| 1.6. Act on Approving Program Summary Report—October 2025 | Treasurer |
| 1.7. Call for Conflict of Interest | Chairperson |

2. Reports – No Reports

3. Decisions needed for encumbering cost-share funds

- | | | |
|---|-------|-------|
| 3.1. Tentative: Brian Grundman- FY23 Long Prairie LCCMR- FSP on 80 acres- \$825 | Anton | 1 min |
|---|-------|-------|

4. Decisions needed for cost-share contract amendments

- | | | |
|--|--------------|-------|
| 4.1. Jacob Colby – C25-0118 Red Eye 3.0 – Request for additional \$206.25 for a new cost share total of \$3,511.80 -Cover Crop | Scheve | 1 min |
| 4.2. Osakis Club Amendment- SWCD Riparian Aid- contract installation date extension request to November 1, 2026 | Christiansen | 1 min |

5. Decision needed for payment of cost-share funds

- | | | |
|---|----------------|-------|
| 5.1. Standing Item: Big Swan Lake Improvement Association – C25-0169 Big Swan Phosphorus Grant \$12,600 -Alum Treatment | Anton | 2 min |
| 5.2. Lyle Ashbaugh – C25-0310 Crow Wing WBIF - \$806.25 – Well Sealing | S. Katterhagen | 2 min |
| 5.3. Neil Zimmer – P25-0558 Soil Health Delivery - \$1,418.85 – Cover Crop | Scheve | 2 min |
| 5.4. Jim Johnson – C24-0198 Mississippi Brainerd WBIF - \$1,794.75 – Cover Crop | Scheve | 2 min |
| 5.5. Jacob Colby – C25-0118 Red Eye 3.0 - \$3,551.80 – Cover Crop | Scheve | 2 min |
| 5.6. Jacob Colby – C25-0118 Red Eye 3.0 - \$870 – Cover Crop | Scheve | 2 min |
| 5.7. Birchdale TWP – FY24 Conservation Contracts- \$25,124.78- Sauk L. Outlet Stabilization | Anton | 2 min |
| 5.8. Hauer- C25-0196 FY25 Long Prairie WBIF- \$TBD- Pit Closure | Anton | 2 min |
| 5.9. Steve Goodwin – C23-3483 Long Prairie WBIF – Amount TBD -WASCOB | Pratt | 2 min |

6. Decisions needed for operations

- | |
|---|
| 6.1. Approval of Crow Wing MOA allowing tribal to join |
| 6.2. Tentative: Approval of EARTH Program signs authorizing management to move forward with development and purchase. |

7. Discussion items

- 7.1. Paid Family and Medical Leave (PFML) Program updates
- 7.2. Public Facing Agenda vs. Informational

8. Contracts and documents approved by Chair

- 8.1. Contract #77-1-2 9/11/2025
- 8.2. Contract #77-1-5 10/10/2025

9. Informational

- 9.1. 2nd Friday of the month –Radio Show
- 9.2. Audit Engagement letter was signed by Management for \$8400 with Clifton & Larson
- 9.3. December 1-3, 2025- MASWCD Annual Convention
- 9.4. P26-0379 -2026/2027 Conservation Contracts Agreement Approved for a total of \$38,768
- 9.5. P26-0289 – 2026/2027 Conservation Delivery Agreement Approved for a total of \$40,108
- 9.6. Vest Requirements: Please make sure you are wearing these for Todd SWCD and related events only. Think about what you say and how you act when you are wearing these vests. You are representing the district, and the County of Todd. We will take a picture today with our vests on.
- 9.7. August 1, 2025, Rick Baum informed Technical- Management staff of a potential increase amendment needed from C24-0198 for the soil tests portion of the CNMP. Manager wanted this noted in minutes as she omitted this note from prior agendas due to forgetfulness. No set amount has been requested for amendment at this time and will likely be brought forth before payout in 2026.

Immediately following the regular board meeting, there will be a brief 10 min break and then, the Todd SWCD Board of Supervisors, Staff, Liaison, and invitees will be moving into a work session to finalize the Plan of Action for 2026. See attached Work Session Agenda.

The next scheduled meeting for the Todd SWCD Board of Supervisors will be Thursday, December 11, 2025 at 8:30 a.m. at the Historic Courthouse in the Commissioner's Board Room located at 215 1st Avenue South, Long Prairie, MN 56347.

Todd SWCD Supervisor and Staff Work Session Agenda

November 13, 2025

Horseshoe Ballroom VRBO

25537 CR 62, Browerville, MN

10:00am to 1:15pm

Potluck Dinner

There will be a brief break following the regularly scheduled SWCD Board of Supervisor Meeting.

Agenda Items:

10:00 am: Celebrations:

- ◆ Envirofest Drone Footage/ Presentation (to be sent to Lions Club and other sponsors)
- ◆ Big Swan Lake Alum Treatment Drone Footage/Presentation

10:30 am: “Old as Dirt” Discussion– *Bring your earliest memories on SWCD Operations to share with Staff* Supervisors

11:00 am: Review of 2025 Plan of Action, Progress and Plan Updates Presentation/Discussion Anton

11:30 am: Supervisor/Commissioner Activity: Who’s in my Neighborhood? Concurrent: Staff Activity: Essential vs. Less Essential

12:00: Potluck Dinner

12:45 pm: Tentative: SWCD as an Entity– EIN Numbers Invitees: Denise Gaida, Jolene Sabrowsky, Jackie Bauer

Concurrent: SWCD Technical Staff only: Events and Activity Scheduling

1:15 pm: Anticipated Formal Adjournment of Work Session





WHERE THE FOREST MEETS THE PRAIRIE

Todd County

● MINNESOTA ● EST. 1855 ●

SOIL AND WATER CONSERVATION DISTRICT

215 1st Avenue South, Suite 104

Long Prairie, MN 56347

Phone: 320-732-2644 Fax: 320-732-4803

Minutes from the October 9, 2025 Regular Board Meeting

The meeting was held in person at Charlotte Tavern located at 22056 US 71, Long Prairie, MN 56347.

Chairperson Wendel called the Thursday, October 9, 2025 meeting to order at 8:40 a.m.

The Pledge of Allegiance was recited.

Call for Introductions.

Board members present in person were: Wayne Wendel, Dale Katterhagen, Barb James, Tom Williamson and Larry Bebus.

Others present in person were: Deja Anton, District Manager, Sarah Katterhagen, Program Coordinator, Dylan Pratt, Conservation Technician, Josh Votruba, Conservation Technician, Kasen Christiansen, Conservation Technician, Alyssa Scheve, Conservation Technician, Jessica Moore, Conservation Technician and Bob Byers, Todd County Commissioner.

Wendel asked if there were any additions or corrections to the agenda. Katterhagen made a motion, seconded by Williamson to accept the revised agenda for the regular October 9, 2025 meeting.

3.3 Remove: Ahrens from cost share contract and cost share funding

3.5 Add on: 7-2-6 Encumbering P26-0058 2026 Soil Health Practices Cost Share - \$29,320.80

5.16 Add on: Rick Baum, Jr – Payment request - C24-0198 Mississippi Brainerd - \$1,302.54

Affirmative: Wendel, Katterhagen, James, Williamson and Bebus. Motion Carried.

Katterhagen made a motion, seconded by James to approve the minutes as distributed from the September 11, 2025 regular board meeting. Affirmative: Wendel, Katterhagen, James, Williamson and Bebus. Motion Carried.

Wendel asked the board to review the September 2025 Treasurer's Report. Program Coordinator summarized disbursement and revenues. Katterhagen made a motion, seconded by Williamson to accept September's 2025 Treasurer's Report with receipts totaling \$21,075.70 and disbursements totaling \$83,478.42. Affirmative: Wendel, Katterhagen, James, Williamson and Bebus. Motion Carried.

Wendel called for conflict of interest. Bebus reported conflict of interest with item 3.3 and Williamson reported a conflict of interest with item 5.5.

The board shared in celebrating the 30th Anniversary of Enviro Fest and for having a successful Soil Health and Grazing event at Herefords on Latimer. Bebus recognized and thanked Dale and Marie Katterhagen for hosting the Enviro Fest for the last 30 years. Katterhagen acknowledged the event would not happen without the Soil and Water office.

Reports:



WHERE THE FOREST MEETS THE PRAIRIE

Todd County

● MINNESOTA ● EST. 1855 ●

SOIL AND WATER CONSERVATION DISTRICT

215 1st Avenue South, Suite 104

Long Prairie, MN 56347

Phone: 320-732-2644 Fax: 320-732-4803

Commissioner's Report: Commissioner Byers reported the Directors for Economic Development and Corrections department have resigned. Todd County's Human Resources Coordinator accepted the Payroll position. The County have been involved with the Cannabis meetings and reviewing land use fee schedule.

Director Report: No report.

Staff Visual Report: Christiansen presented his visual report. Christiansen's visual report highlighted the SWCD tree planter, projects from the last year, wetland violations, drain tile projects and recently Christiansen passed his professional wetland certification.

Manager Report Staff Accomplishments: Anton reported the last month has been busy with outreach events. Anton walked through a brief report of each staff persons accomplishments over the past month.

SWCD Manager Report: Anton shared a PowerPoint for activates happening within each Supervisor District. District Manager can provide a copy of the report upon request.

NRCS Report: No report.

FSA Report: No report.

1W1P- Sauk River Report: Next policy meeting will be November 20, 2025.

1W1P Red Eye Report: Next policy meeting will be October 20, 2025.

1W1P Long Prairie Report: Next policy meeting will be November 20, 2025.

1W1P Crow Wing Report: Next policy meeting will be October 29, 2025.

1W1P Mississippi Brainerd Report: Next policy meeting will be October 27, 2025.

BWSR Report: No report.

Decisions needed for encumbering cost share funds:

Pratt reviewed the Goodwin project request. Pratt informed the board that there will be changes to the plan. Anton informed the board she may be contacting the Chair before November's board meeting for cost share approval. No action was taken on encumbering request.

James made a motion, seconded by Williamson to approve encumbering FY23 LCCMR Forestry cost share funds for Jon and Sonja Nelson, C#20251009-3.2 in the amount of \$1,200 for a forest stewardship plan. Affirmative: Wendel, Katterhagen, James, Williamson and Bebus. Motion Carried.

James made a motion, seconded by Katterhagen to approve encumbering C22-4860 Sauk River WBIF cost share funds for Nathan and Jessica Waldvogel, C#20251009-3.3 in the amount of \$47,049.90 for a lined



WHERE THE FOREST MEETS THE PRAIRIE

Todd County

● MINNESOTA ● EST. 1855 ●

SOIL AND WATER CONSERVATION DISTRICT

215 1st Avenue South, Suite 104

Long Prairie, MN 56347

Phone: 320-732-2644 Fax: 320-732-4803

waterway project pending Sauk River WBIF technical committee approval. Affirmative: Wendel, Katterhagen, James and Williamson. Abstained: Bebus. Motion Carried.

Bebus made a motion, seconded by James to approve encumbering C23-3483 Long Prairie WBIF cost share funds for Chris Westerberg, C#20251009-3.4 in the amount of \$37,034.82 for a water and sediment control basin project. Affirmative: Wendel, Katterhagen, James, Williamson and Bebus. Motion Carried.

Katterhagen made a motion, seconded by Bebus to approve encumbering P26-0058 2026 Soil Health Practices cost share funds (RCPP) for Contract #7-1-6 in the amount of \$29,320.80 for a cover project. Affirmative: Wendel, Katterhagen, James, Williamson and Bebus. Motion Carried.

Decisions needed for cost share contract amendments:

Bebus made a motion, seconded by Williamson to approve amendment request for additional C24-0198 Mississippi Brainerd WBIF cost share funds for Greg Hulinsky, C#20250814-3.13 in the amount of \$211.87 for a new total cost share funds in the amount of \$1,340.06 for a cover crop project. Affirmative: Wendel, Katterhagen, James, Williamson and Bebus. Motion Carried.

Decision needed for payment of cost share funds:

Katterhagen made a motion, seconded by Williamson to approve payment of C24-0198 Mississippi Brainerd WBIF cost share funds for Greg Hulinsky, C#20250814-3.13 in the amount of \$1,340.06 for a cover crop project. Affirmative: Wendel, Katterhagen, James, Williamson and Bebus. Motion Carried.

James made a motion, seconded by Williamson to approve payment of C25-0310 Crow Wing WBIF cost share funds for Daven Hansen, C#0612205-3.2 in the amount of \$868.50 for a forest stewardship plan. Affirmative: Wendel, Katterhagen, James, Williamson and Bebus. Motion Carried.

Williamson made a motion, seconded by Bebus to approve payment of C24-0198 Mississippi Brainerd WBIF cost share funds for Lawrence Mettler, C#20250410-3.3 in the amount of \$588.69 for a forest stewardship plan. Affirmative: Wendel, Katterhagen, James, Williamson and Bebus. Motion Carried.

James made a motion, seconded by Williamson to approve payment of FY25 Sauk River CRP Incentive cost share funds for Carl Smith in the amount of \$3,400 for filter strip and duck nesting project. Affirmative: Wendel, Katterhagen, James, Williamson and Bebus. Motion Carried.

Katterhagen made a motion, seconded by Bebus to approve payment of FY25 Sauk River CRP Incentive cost share funds for Tom Williamson in the amount of \$15,000 for a wetland restoration project. Affirmative: Wendel, Katterhagen, James and Bebus. Abstained: Williamson. Motion Carried.

Williamson made a motion, seconded by James to approve payment of FY25 Sauk River CRP Incentive cost share funds for Greg Cipala in the amount of \$4,959 for a wetland restoration project. Affirmative: Wendel, Katterhagen, James, Williamson and Bebus. Motion Carried.



WHERE THE FOREST MEETS THE PRAIRIE

Todd County

● MINNESOTA ● EST. 1855 ●

SOIL AND WATER CONSERVATION DISTRICT

215 1st Avenue South, Suite 104

Long Prairie, MN 56347

Phone: 320-732-2644 Fax: 320-732-4803

Katterhagen made a motion, seconded by Bebus to approve payment of FY25 Sauk River CRP Incentive cost share funds for Alex Krebsbach in the amount of \$297 for a field windbreak project. Affirmative: Wendel, Katterhagen, James, Williamson and Bebus. Motion Carried.

James made a motion, seconded by Katterhagen to approve payment of FY25 Sauk River CRP Incentive cost share funds for Robert Winter in the amount of \$972 for a pollinator planting project. Affirmative: Wendel, Katterhagen, James, Williamson and Bebus. Motion Carried.

Bebus made a motion, seconded by Williamson to approve payment of P25-0471 Long Prairie CRP Incentive in the amount of \$1,914.14 and C25-0196 Long Prairie WBIF cost share funds in the amount of \$5,505.86 for a total of \$7,420 cost share funds for Mark Zastrow for a pollinator planting. Affirmative: Wendel, Katterhagen, James, Williamson and Bebus. Motion Carried.

James made a motion, seconded by Katterhagen to approve payment of C24-0198 Mississippi Brainerd WBIF cost share funds for Jason and Heather Zander, C#2025.07.10-3.2 in the amount of \$17,329 for phase 1 of a shoreline project pending certification from the engineer. Affirmative: Wendel, Katterhagen, James, Williamson and Bebus. Motion Carried.

Bebus made a motion, seconded by James to approve payment of C24-0088 Sauk River WBIF cost share funds for Jeff and Carol Mayer, C#2025.09.11-3.6 in the amount of \$3,718.86 for a lined waterway project. Affirmative: Wendel, Katterhagen, James, Williamson and Bebus. Motion Carried.

Commissioner Byers left the meeting 10:00 a.m.

James made a motion, seconded by Katterhagen to approve payment of C25-0196 Big Swan Phosphorus Reduction Grant for Big Swan Lake Improvement Association in the amount of \$233,334 for Alum Treatment. Affirmative: Wendel, Katterhagen, James, Williamson and Bebus. Motion Carried.

Katterhagen made a motion, seconded by Bebus to approve payment of C22-7830 Red Eye WBIF cost share funds for Jeremy Arvidson in the amount of \$148.33 for the final payment for pit closure project. Affirmative: Wendel, Katterhagen, James, Williamson and Bebus. Motion Carried.

James made a motion, seconded by Williamson to approve payment of C24-0088 Sauk River WBIF cost share funds in the amount of \$5,625, FY24-0299 2024 Conservation Contracts in the amount of \$1,653.38 and Feedlot Performance funds in the amount of \$6,025.82 for James Julig, C#20250814-3.5 for a total of \$13,304.20 in cost share funds for an access control and exclusion fencing project. Affirmative: Wendel, Katterhagen, James, Williamson and Bebus. Motion Carried.

Katterhagen made a motion, seconded by Williamson to approve payment of C24-0198 Mississippi Brainerd WBIF cost share funds for Adam and Maria Abrahamson, C#20250313-3.1 in the amount of \$1,109.25 for a forest stewardship plan. Affirmative: Wendel, Katterhagen, James, Williamson and Bebus. Motion Carried.

Katterhagen made a motion, seconded by Williamson to approve payment of C24-0198 Mississippi Brainerd WBIF cost share funds for Rick Baum, Jr, C#20250814-3.14 in the amount of \$1,302.54 for a cover crop project. Affirmative: Wendel, Katterhagen, James, Williamson and Bebus. Motion Carried.



WHERE THE FOREST MEETS THE PRAIRIE

Todd County

● MINNESOTA ● EST. 1855 ●

SOIL AND WATER CONSERVATION DISTRICT

215 1st Avenue South, Suite 104

Long Prairie, MN 56347

Phone: 320-732-2644 Fax: 320-732-4803

Decisions needed for operations:

James made a motion, seconded by Williamson to accept the 2025 Enviro Fest donations in the amount of \$3,400 ending 9/30/2025. Affirmative: Wendel, Katterhagen, James, Williamson and Bebus. Motion Carried.

Discussion Items:

Board consensus to host Enviro Fest in 2026. Board consensus the SWCD staff can decide on a date for Enviro Fest. Anton recommended sending out one question survey to the schools about the dates for Enviro Fest.

The board reviewed 2025 SWCD Resolution packet. The board would like the office to submit their votes on their behalf to MASWCD.

The board would like to have a potluck for the November's work session meeting. No work session discussion points were discussed.

Anton informed the board that there may be accounting changes that have been requested by the Todd County Auditors office regarding SWCD EIN and reporting to the Federal and State systems. Anton will provide more information and discussion about this topic at November's work session.

Anton shared Long Prairie Chamber of Commerce response about not being a member of the Long Prairie Chamber.

Informational:

The following information was provided for information purposes:

2nd Friday of the month – Radio Show.

October 21, 22, 23, 2025 – BWSR Academy for staff.

December 1-3, 2025- MASWCD Annual Convention – Registration Opens is open.

Joe Asfeld cover crop project was approved by Wendel on 9/24/25 in the amount of \$4,760.04.

Neil Zimmer cover crop project was approved by Wendel on 9/30/2025 in the amount of \$1,415.85.

Jacob Colby cover crop project was approved by Wendel on 9/30/2025 in the amount of \$3,305.55.

Berscheit cover crops project was approved by Wendel on 10/7/2025 in the amount of \$15,606.56.

Crow Wing MOA update will be discussed at future meeting about the White Nation Tribe being a member of the collaboration under the MOA agreement.



WHERE THE FOREST MEETS THE PRAIRIE

Todd County

● MINNESOTA ● EST. 1855 ●

SOIL AND WATER CONSERVATION DISTRICT

215 1st Avenue South, Suite 104

Long Prairie, MN 56347

Phone: 320-732-2644 Fax: 320-732-4803

Supervisors provided sizes for vests.

Drone footage of Enviro Fest will be presented at a different meeting due to time. Anton will share the footage with the Lions and other organizations that donated toward Enviro Fest.

Awards luncheon program will follow the board meeting.

The next scheduled meeting for the Todd SWCD Board of Supervisors will be Thursday, November 13, 2025 at 8:30 a.m. The meeting will take place at 25537 County Road 62, Browerville, MN 56438 (formerly known as the Horseshoe Ballroom). This meeting will also be a work session meeting.

Chairperson Wendel adjourned the meeting at 11:10 a.m.

The Awards Luncheon program followed the board meeting and ended at 1:30 p.m.

Sarah Katterhagen, Minute Preparer

Date

Deja Anton, SWCD District Manager

Date

Barb James, Secretary

Date

**TODD SOIL & WATER CONSERVATION DISTRICT
SWCD TREASURER'S MONTHLY REPORT
PROGRAM SUMMARY**

| PROGRAM | CASH BALANCE 10/1/2025 | RECEIPTS | DISBURSEMENTS | ADJUSTMENTS | CASH BALANCE 10/31/2025 |
|--|---------------------------------------|---------------------|----------------------|--------------------|--|
| District Savings Account | \$ 278,767.35 | | | | \$ 278,767.35 |
| Change Fund | \$ 20.00 | | | | \$ 20.00 |
| General/Misc. Revenue/MCIT | \$ 3,287.76 | | \$ 495.00 | | \$ 2,792.76 |
| Tree Program | \$ 14,369.25 | | \$ 112.85 | | \$ 14,256.40 |
| Todd County Allocation | \$ 15,000.00 | | \$ 5,000.00 | | \$ 10,000.00 |
| District Operations | \$ (4,285.00) | \$ 4,285.00 | \$ 1,085.00 | | \$ (1,085.00) |
| MPCA Feedlot Program/County Program - FY25 | \$ 99,380.47 | | \$ 51,825.88 | | \$ 47,554.59 |
| County Appropriation for Feedlot Program | \$ 92,209.00 | | | | \$ 92,209.00 |
| Feedlot Performance funds | \$ 32,550.86 | | \$ 19,947.47 | | \$ 12,603.39 |
| NRBG Water Plan Funds/County Program - FY25 | \$ 13,264.82 | | \$ 9,615.11 | | \$ 3,649.71 |
| Water Plan Levy | \$ 2,157.71 | | \$ 2,790.79 | | \$ (633.08) |
| NRBG Wetland Program Funds/County Program - FY25 | \$ - | | | | \$ - |
| County Appropriation for Wetland Program | \$ 21,503.32 | | \$ 18,860.55 | | \$ 2,642.77 |
| Todd County AIS Program/County Program | \$ 39,755.50 | | \$ 38,580.74 | | \$ 1,174.76 |
| Todd County Riparian AID Education | \$ 5,526.19 | | \$ 5,526.19 | | \$ - |
| Todd County Riparian AID Cost Share Program - 2024 | \$ 45,143.22 | | \$ 21,861.85 | | \$ 23,281.37 |
| Todd County Riparian AID Cost Share Program - 2025 | \$ 21,861.85 | | | | \$ 21,861.85 |
| MN State Grant | \$ 13.51 | \$ 1,891.00 | \$ 65.04 | | \$ 1,839.47 |
| Ob Well Program | \$ - | | \$ 2,340.00 | | \$ (2,340.00) |
| FY2025 Conservation Delivery | \$ - | | | | \$ - |
| C24-0174 Soil Health Practitioner Grant / Staffing | \$ 129,784.46 | | \$ 28,313.71 | | \$ 101,470.75 |
| 2024 MN Grant SWCD AID | \$ - | | | | \$ - |
| 2025 MN Grant SWCD AID | \$ 133,968.58 | | \$ 34,584.45 | | \$ 99,384.13 |
| 2026 MN Grant SWCD AID | \$ 68,848.06 | | | | \$ 68,848.06 |
| FY2025 Buffer Implementation | \$ 11,104.19 | | \$ 7,715.01 | | \$ 3,389.18 |
| FY2024 Conservation Contracts | \$ 7,394.16 | | \$ 1,653.38 | | \$ 5,740.78 |
| FY2025 Conservation Contracts | \$ 19,384.00 | | | | \$ 19,384.00 |
| P25-0558 MN Soil Health Delivery Grant C/S | \$ 11,232.18 | | | | \$ 11,232.18 |
| P25-0558 MN Soil Health Delivery Grant Project Development | \$ (744.82) | | \$ 765.25 | | \$ (1,510.07) |
| P25-0558 MN Soil Health Delivery Grant Technical Assistance | \$ - | | \$ 1,943.31 | | \$ (1,943.31) |
| P26-0058 2026 RCPP Soil Health Practices Technical Assistance | \$ 30,000.00 | | \$ 709.39 | | \$ 29,290.61 |
| P26-0058 2026 RCPP Soil Health Practices Cost Share | \$ 150,000.00 | | | | \$ 150,000.00 |
| C23-3483 Long Prairie Collaborative WBIF 2023 Admin | \$ 58,253.44 | | \$ 5,051.49 | | \$ 53,201.95 |
| C23-3483 Long Prairie Collaborative WBIF 2023 PD | \$ 57,530.57 | | \$ 1,096.70 | | \$ 56,433.87 |
| C23-3483 Long Prairie Collaborative WBIF 2023 TA | \$ 13,162.25 | | \$ 22,516.52 | | \$ (9,354.27) |
| C23-3483 Long Prairie Collaborative WBIF 2023 CS | \$ (75,858.85) | | \$ 13,651.95 | | \$ (89,510.80) |
| P25-0471 2025 - Long Prairie Watershed CRP Incentive Grant | \$ 49,784.14 | | \$ 24,314.14 | | \$ 25,470.00 |
| C25-0196 Long Prairie Collaborative WBIF 2025 Admin | \$ 80,346.06 | | \$ 621.29 | | \$ 79,724.77 |
| C25-0196 Long Prairie Collaborative WBIF 2025 PD | \$ 141,179.67 | | \$ 19,016.09 | | \$ 122,163.58 |
| C25-0196 Long Prairie Collaborative WBIF 2025 TA | \$ 121,481.18 | | \$ 1,582.80 | | \$ 119,898.38 |
| C25-0196 Long Prairie Collaborative WBIF 2025 CS | \$ 118,634.75 | | \$ 7,967.11 | | \$ 110,667.64 |
| C25-0169 Big Swan Phosphorus Grant Tier 1 | \$ 301,914.50 | | \$ 235,226.75 | | \$ 66,687.75 |
| Red Eye One Watershed, One Plan Reimbursement - Grant #2 | \$ (18,168.75) | | \$ 325.77 | | \$ (18,494.52) |
| C25-0118 Red Eye One Watershed, One Plan Reimbursement - Grant #3 | \$ - | | \$ 1,815.11 | | \$ (1,815.11) |
| Sauk River One Watershed, One Plan Technical Reimbursement Grant #1 | \$ - | | \$ 152.66 | | \$ (152.66) |
| Sauk River One Watershed, One Plan CS Reimbursement Grant #1 | \$ - | | | | \$ - |
| C24-0088 Sauk River One Watershed, One Plan - Reimbursement Grant #2 | \$ (43,682.76) | | \$ 19,304.39 | | \$ (62,987.15) |
| P25-0821 CRP Sauk River Watershed Incentive Grant | | | \$ 21,148.00 | | |
| C24-0198 Mississippi River One Watershed - Implementation | \$ (31,537.53) | \$ 13,001.28 | \$ 26,239.14 | | \$ (44,775.39) |
| C25-0310 Crow Wing WBIF Phase #1 | \$ (2,173.50) | | \$ 1,101.79 | | \$ (3,275.29) |
| FY2023 Red Eye Watershed LCCMR Grant | \$ - | | | | \$ - |
| FY2023 Long Prairie Watershed LCCMR Grant | \$ (463.36) | | \$ 4,749.94 | | \$ (5,213.30) |
| MN Ag Water Program/Partnership- Reimbursement | \$ - | \$ 1,734.86 | \$ 1,734.86 | | \$ - |
| WCTSA Nutrient Management/Partnership Reimbursement | \$ - | | \$ 8,136.55 | | \$ (8,136.55) |
| TOTAL | \$ 2,011,898.43 | \$ 20,912.14 | \$ 669,544.02 | \$ - | \$ 1,384,414.55 |

Prepared by: Sarah Katterhagen, Program Coordinator

Date

Reviewed by: Deja Anton, SWCD District Manager

Date

Tom Williamson, District Treasurer

Date

ACCOUNT ACTIVITY REPORT

Page Break Option: 1 1 - Page Break by FUND
2 - Page Break by DEPT

Print Service Dates: No

Sort: 1st: 2nd 3rd 4th 5th 6th
G D T N M W

F - G/L Object Within Fund Number
G - G/L Account Number
P - G/L Object Within Dept Number
D - Transaction Date
M - G/L Month & Year
N - Vendor/Payer Name
T - Type Of Transaction
W - Receipt/Warrant Number

Range Subtotals: 1 1 - No Subtotals
2 - Detail and Subtotals by OBJECT Range
3 - Subtotals only by OBJECT Range
4 - Account Totals and Subtotals by OBJECT Range
5 - Account Totals and Subtotals by PROGRAM Range

Report Basis: 1 Cash Only This Basis?: No

Print YTD Totals: No Type of Report: 1 1 - DETAIL
2 - ABBREVIATED

Specific Dates: From: 10/01/2025 Thru: 10/31/2025

Comment:

FUND Range From 79 Thru 79

DEPT Range From 603 Thru 603

SARAHK

11/6/25 9:08AM

Fund 79 - TODD SOIL & WATER AGENCY FU

**** Todd County ****

ACCOUNT ACTIVITY REPORT

From: 10/01/2025 Thru: 10/31/2025

Page 2

Report Basis: 1



| Tran | | G/L | | Receipt/Warrant | | Invoice | | Accr | | | | |
|--|------|----------------------------|---------|-----------------|------------|---------|------------|-----------------------------|----------|----|-------|------|
| SC | Type | Vendor | Mont | NUMBER | DATE | Seq | AMOUNT | Description / Service Dates | Number | Cd | Basis | R1R2 |
| DEPT 603 - S&W (FEEDLOT-CO MATCH) | | | | | | | | | | | | |
| PROGRAM 000 - PROGRAM | | | | | | | | | | | | |
| 79-603-000-0000-5301 - MN GRANTS (GENERAL/AGENCY PARTNERS) | | | | | | | | | | | | |
| RE | RE | State of MN - DD | 10/2025 | 148033 | 10/10/2025 | 222 | 1,891.00 - | 77-01-23-27 | | | | 1 |
| | | | | | | Total | 1,891.00 - | | | | | |
| 79-603-000-0000-5801 - MISCELLANEOUS REVENUE | | | | | | | | | | | | |
| JE | JE | Q3 2025 | 10/2025 | 20538 | 10/31/2025 | 901 | 4,285.00 - | SWCD District Operations | | | | 1 |
| | | | | | | Total | 4,285.00 - | | | | | |
| 79-603-000-0000-6103 - PER DIEM | | | | | | | | | | | | |
| DI | DI | 12811-BEBUS/LARRY | 10/2025 | 245266 | 10/13/2025 | 333 | 125.00 | SWCD Board Meeting | 10-9-25 | | | 1 |
| DI | DI | 12811-BEBUS/LARRY | 10/2025 | 245266 | 10/13/2025 | 333 | 125.00 | AREA II Mtg - Benson | 9-30-25 | | | 1 |
| DI | DI | 17255-JAMES/BARBARA | 10/2025 | 905432 | 10/13/2025 | 333 | 125.00 | SWCD Board Meeting | 10-9-25 | | | 1 |
| DI | DI | 5981-KATTERHAGEN/DALE | 10/2025 | 905433 | 10/13/2025 | 333 | 125.00 | SWCD Board Mtg | 10-9-25 | | | 1 |
| DI | DI | 5981-KATTERHAGEN/DALE | 10/2025 | 905433 | 10/13/2025 | 333 | 125.00 | Enviro Fest Set Up | 9-17-25 | | | 1 |
| DI | DI | 5981-KATTERHAGEN/DALE | 10/2025 | 905433 | 10/13/2025 | 333 | 125.00 | Enviro Fest - Event | 9-18-25 | | | 1 |
| DI | DI | 23002-WENDEL/WAYNE | 10/2025 | 245305 | 10/13/2025 | 333 | 125.00 | SWCD Board Meeting | 10-9-25 | | | 1 |
| | | | | | | Total | 875.00 | | | | | |
| 79-603-000-0000-6331 - TRAVEL AND EXPENSE (MILEAGE) | | | | | | | | | | | | |
| DI | DI | 12811-BEBUS/LARRY | 10/2025 | 245266 | 10/13/2025 | 333 | 26.60 | Mileage | 10-9-25 | | | 1 |
| DI | DI | 12811-BEBUS/LARRY | 10/2025 | 245266 | 10/13/2025 | 333 | 110.60 | Mileage | 9-30-25 | | | 1 |
| DI | DI | 17255-JAMES/BARBARA | 10/2025 | 905432 | 10/13/2025 | 333 | 26.60 | Mileage | 10-9-25 | | | 1 |
| DI | DI | 5981-KATTERHAGEN/DALE | 10/2025 | 905433 | 10/13/2025 | 333 | 19.60 | Mileage | 10-9-25 | | | 1 |
| DI | DI | 23002-WENDEL/WAYNE | 10/2025 | 245305 | 10/13/2025 | 333 | 26.60 | Mileage | 10-9-25 | | | 1 |
| | | | | | | Total | 210.00 | | | | | |
| 79-603-000-0000-6356 - OTHER MISCELLANEOUS CHARGES | | | | | | | | | | | | |
| DI | DI | 11166-SCIENCE MUSEUM OF MN | 10/2025 | 245340 | 10/20/2025 | 333 | 495.00 | Enviro Fest - Donations | #INV1295 | | | 1 |
| | | | | | | Total | 495.00 | | | | | |
| 79-603-000-0000-6365 - EXPENSES - DEPT. PROJECTS | | | | | | | | | | | | |
| DI | DI | 1129-MN DEPT OF REVENUE | 10/2025 | 1134 | 10/08/2025 | 333 | 4.00 | Q3 Sales Tax - SWCD | | | | 1 |
| JE | JE | Q3 2025 | 10/2025 | 20542 | 10/31/2025 | 901 | 108.85 | SWCD Wage Reimb | | | | 1 |
| | | | | | | Total | 112.85 | | | | | |
| 79-603-000-0000-6365 - EXPENSES - DEPT. PROJECTS | | | | | | | | | | | | |

SARAHK

11/6/25 9:08AM

Fund 79 - TODD SOIL & WATER AGENCY FU

**** Todd County ****

ACCOUNT ACTIVITY REPORT

From: 10/01/2025 Thru: 10/31/2025

Page 3

Report Basis: 1



| SC | Tran Type | Vendor | G/L Mont | Receipt/Warrant NUMBER DATE | Seq | AMOUNT | Description / Service Dates | Invoice Number | Accr Cd | Basis | R1R2 |
|----|-----------|--|----------|-----------------------------|------------|---------------|-----------------------------|--------------------------------|-----------|-------|------|
| | | 79-603-000-0000-6845 - PROGRAM/PROJECT EXP(GENERAL/AGENCY | | | | | | | | | |
| JE | JE | Q3 2025 | 10/2025 | 20542 | 10/31/2025 | 901 | 65.04 | SWCD Wage Reimb | | | 1 |
| | | 79-603-000-0000-6845 - PROGRAM/PROJECT EXP | | | | | | | | | |
| | | | | | | Total | 65.04 | | | | |
| | | PROGRAM 000 - | | | | | | | | | |
| | | | | | | PROGRAM Total | 4,418.11 - | | | | |
| | | PROGRAM 517 - FY2023 LCCMR PILOT TREE PLANTING PROJECT | | | | | | | | | |
| | | 79-603-517-0000-6806 - ADMIN EXP-FY23 LCCMR PILOT TREE-LP W. | | | | | | | | | |
| JE | JE | Q3 2025 | 10/2025 | 20542 | 10/31/2025 | 901 | 962.37 | SWCD Wage Reimb | | | 1 |
| | | 79-603-517-0000-6806 - ADMIN EXP-FY23 LCCMR PILOT TREE- | | | | | | | | | |
| | | | | | | Total | 962.37 | | | | |
| | | 79-603-517-0000-6810 - PROJ DEV EXP-FY23 LCCMR PILOT TREE-LP | | | | | | | | | |
| DI | DI | 16276-KANATI LAND MANAGEMENT | 10/2025 | 245329 | 10/20/2025 | 333 | 2,312.50 | Prep/Station at Enviro Fest | 2340 | | 1 |
| JE | JE | Q3 2025 | 10/2025 | 20542 | 10/31/2025 | 901 | 365.04 | SWCD Wage Reimb | | | 1 |
| | | 79-603-517-0000-6810 - PROJ DEV EXP-FY23 LCCMR PILOT | | | | | | | | | |
| | | | | | | Total | 2,677.54 | | | | |
| | | 79-603-517-0000-6849 - TECH ASST EXP-FY23 LCCMR PILOT TREE-L | | | | | | | | | |
| JE | JE | Q3 2025 | 10/2025 | 20542 | 10/31/2025 | 901 | 1,110.03 | SWCD Wage Reimb | | | 1 |
| | | 79-603-517-0000-6849 - TECH ASST EXP-FY23 LCCMR PILOT | | | | | | | | | |
| | | | | | | Total | 1,110.03 | | | | |
| | | PROGRAM 517 - FY2023 LCCMR PILOT TREE PLANTING PROJECT | | | | | | | | | |
| | | | | | | Total | 4,749.94 | | | | |
| | | PROGRAM 518 - C23-3483 LP COLLABORATIVE FY23 WBIF | | | | | | | | | |
| | | 79-603-518-0000-6806 - ADMIN EXP-C23-3483 LP COLLABORATIVE | | | | | | | | | |
| DI | DI | 11431-DOUGLAS SWCD | 10/2025 | 245234 | 10/06/2025 | 333 | 3,634.84 | Admin Hours - Q2 2025 | 7-2025-2 | | 1 |
| JE | JE | Q3 2025 | 10/2025 | 20542 | 10/31/2025 | 901 | 1,416.65 | SWCD Wage Reimb | | | 1 |
| | | 79-603-518-0000-6806 - ADMIN EXP-C23-3483 LP | | | | | | | | | |
| | | | | | | Total | 5,051.49 | | | | |
| | | 79-603-518-0000-6807 - COST SHARE EXP-C23-3483 LP COLLABORATIVE | | | | | | | | | |
| DI | DI | 11431-DOUGLAS SWCD | 10/2025 | 245234 | 10/06/2025 | 333 | 12,414.45 | Pit Closure Project Completion | 7-2025-2 | | 1 |
| DI | DI | 11431-DOUGLAS SWCD | 10/2025 | 245234 | 10/06/2025 | 333 | 1,237.50 | Weal Sealing Project | 7-2025-2 | | 1 |
| | | 79-603-518-0000-6807 - COST SHARE EXP-C23-3483 LP | | | | | | | | | |
| | | | | | | Total | 13,651.95 | | | | |
| | | 79-603-518-0000-6810 - PRJ DEV EXP-C23-3483 LP COLLABORATIVE | | | | | | | | | |
| DI | DI | 14447-WADENA SWCD | 10/2025 | 245262 | 10/06/2025 | 333 | 678.02 | Staff Time Proj Dev: Q1 Q2 Q3 | 3618 | | 1 |
| DI | DI | 20400-THE LAMAR COMPANIES | 10/2025 | 245342 | 10/20/2025 | 333 | 300.00 | Drinking Water Billboard | 117555089 | | 1 |
| JE | JE | Supplies and Services Q3 2025 | 10/2025 | 20541 | 10/31/2025 | 901 | 118.68 | SWCD-GrantAllowableDirectChgs | | | 1 |
| | | 79-603-518-0000-6810 - PRJ DEV EXP-C23-3483 LP | | | | | | | | | |
| | | | | | | Total | 1,096.70 | | | | |
| | | 79-603-518-0000-6849 - TECH ASSIST EXP-C23-3483 LP COLLABORATIVE | | | | | | | | | |

SARAHK

11/6/25 9:08AM

Fund 79 - TODD SOIL & WATER AGENCY FUND

**** **Todd County** ****

ACCOUNT ACTIVITY REPORT

From: 10/01/2025 Thru: 10/31/2025

Page 4

Report Basis: 1



| SC | Tran Type | Vendor | G/L Mont | Receipt/Warrant NUMBER | DATE | Seq | AMOUNT | Description / Service Dates | Invoice Number | Accr Cd | Basis | R1R2 |
|----|-----------|--|----------|------------------------|------------|-----|-----------|------------------------------|----------------|---------|-------|------|
| | | 79-603-518-0000-6849 - TECH ASSIST EXP-C23-3483 LP COLLABORATIVE FY23 WBIF | | | | | | | | | | |
| DI | DI | 11431-DOUGLAS SWCD | 10/2025 | 245234 | 10/06/2025 | 333 | 19,610.33 | Tech Hours - Q2 2025 | 7-2025-2 | | | 1 |
| JE | JE | Q3 2025 | 10/2025 | 20542 | 10/31/2025 | 901 | 2,906.19 | SWCD Wage Reimb | | | | 1 |
| | | 79-603-518-0000-6849 - TECH ASSIST EXP-C23-3483 LP Total | | | | | | | | | | |
| | | PROGRAM 518 - C23-3483 LP Total | | | | | | | | | | |
| | | 42,316.66 | | | | | | | | | | |
| | | PROGRAM 519 - SWCD AID | | | | | | | | | | |
| | | 79-603-519-0000-6806 - ADMINISTRATION EXP-SWCD AID | | | | | | | | | | |
| JE | JE | Q3 2025 | 10/2025 | 20542 | 10/31/2025 | 901 | 14,363.04 | SWCD Wage Reimb | | | | 1 |
| | | 79-603-519-0000-6806 - ADMINISTRATION EXP-SWCD AID Total | | | | | | | | | | |
| | | 14,363.04 | | | | | | | | | | |
| | | 79-603-519-0000-6837 - OPERATIONAL EXP-SWCD AID | | | | | | | | | | |
| DI | DI | 17978-CHARLOTTE TAVERN INC. | 10/2025 | 245318 | 10/20/2025 | 333 | 681.27 | Awards Luncheon Program | | | | 1 |
| JE | JE | Q3 2025 | 10/2025 | 20538 | 10/31/2025 | 901 | 4,285.00 | SWCD District Operations | | | | 1 |
| | | 79-603-519-0000-6837 - OPERATIONAL EXP-SWCD AID Total | | | | | | | | | | |
| | | 4,966.27 | | | | | | | | | | |
| | | 79-603-519-0000-6839 - PROMOTIONAL EXPENSE-SWCD AID | | | | | | | | | | |
| DI | DI | 16452-WINNING EDGE GRAPHICS INC | 10/2025 | 905444 | 10/13/2025 | 333 | 245.00 | 2025 Promo - Signs & Plaques | 75529 | | | 1 |
| | | 79-603-519-0000-6839 - PROMOTIONAL EXPENSE-SWCD AID Total | | | | | | | | | | |
| | | 245.00 | | | | | | | | | | |
| | | 79-603-519-0000-6849 - TECH ASSIST EXP-SWCD AID | | | | | | | | | | |
| JE | JE | Q3 2025 | 10/2025 | 20542 | 10/31/2025 | 901 | 15,010.14 | SWCD Wage Reimb | | | | 1 |
| | | 79-603-519-0000-6849 - TECH ASSIST EXP-SWCD AID Total | | | | | | | | | | |
| | | 15,010.14 | | | | | | | | | | |
| | | PROGRAM 519 - SWCD AID Total | | | | | | | | | | |
| | | 34,584.45 | | | | | | | | | | |
| | | PROGRAM 523 - C22-7830 RED EYE 1W1P | | | | | | | | | | |
| | | 79-603-523-0000-6807 - COST SHARE EXP-C22-7830 RED EYE 1W1P | | | | | | | | | | |
| DI | DI | 17941-ARVIDSON/JEREMY | 10/2025 | 245308 | 10/20/2025 | 333 | 148.33 | Cost Share Payment | | | | 1 |
| DI | DI | 18040-JULIG/JAMES | 10/2025 | 245328 | 10/20/2025 | 333 | 5,625.00 | Cost Share Payment | | | | 1 |
| | | 79-603-523-0000-6807 - COST SHARE EXP-C22-7830 RED EYE Total | | | | | | | | | | |
| | | 5,773.33 | | | | | | | | | | |
| | | 79-603-523-0000-6810 - PRJ DEV EXP-C22-7830 RED EYE 1W1P | | | | | | | | | | |
| JE | JE | Q3 2025 | 10/2025 | 20542 | 10/31/2025 | 901 | 177.44 | SWCD Wage Reimb | | | | 1 |
| | | 79-603-523-0000-6810 - PRJ DEV EXP-C22-7830 RED EYE 1W1P Total | | | | | | | | | | |
| | | 177.44 | | | | | | | | | | |
| | | PROGRAM 523 - C22-7830 RED EYE Total | | | | | | | | | | |
| | | 5,950.77 | | | | | | | | | | |
| | | PROGRAM 525 - 2025-CRP STATE INCENTIVES PROGRAM | | | | | | | | | | |



| Tran | SC | Type | Vendor | G/L | Mont | Receipt/Warrant | Seq | AMOUNT | Description / Service Dates | Invoice | Accr | Basis | R1R2 |
|------|----|---------------------------------|--|--------|------------|-----------------|------|-------------|--------------------------------|----------|------|-------|------|
| | | | | | | NUMBER | DATE | | | Number | Cd | | |
| | | | 79-603-525-0000-6807 - COST SHARE EXP-2025-CRP STATE INCENT | | | | | | | | | | |
| DI | DI | 11431-DOUGLAS SWCD | 10/2025 | 245234 | 10/06/2025 | 333 | | 22,400.00 | 6 CRP Completed Projects | 7-2025-2 | | | 1 |
| | | | 79-603-525-0000-6807 - COST SHARE EXP-2025-CRP STATE | | | | | 22,400.00 | | | | | |
| | | | 79-603-525-0000-6872 - GRANTS-2025-CRP STATE INCENTIVE PRO | | | | | | | | | | |
| DI | DI | 14660-ZASTROW/MARK | 10/2025 | 245348 | 10/20/2025 | 333 | | 1,914.14 | Incentive Payment | | | | 1 |
| | | | 79-603-525-0000-6872 - GRANTS-2025-CRP STATE INCENTIVE | | | | | 1,914.14 | | | | | |
| | | | PROGRAM 525 - 2025-CRP STATE INCENTIVES PROGRAM | | | | | 24,314.14 | | | | | |
| | | | PROGRAM 526 - C24-0198 MISS-BRAINERD CWMP IMPLEMENTATI | | | | | | | | | | |
| | | | 79-603-526-0000-5801 - MISC REVENUE: MISS-BRAINERD CWMP IMPL | | | | | | | | | | |
| RE | RE | Todd County Soil & Water | 10/2025 | 148214 | 10/22/2025 | 222 | | 3,054.35 - | WCTSA Staff Time 2025 Q3 - Ait | | | | 1 |
| RE | RE | Todd County Soil & Water | 10/2025 | 148214 | 10/22/2025 | 222 | | 5,062.93 - | SWCD Staff Time 2025 Q3 - Aitk | | | | 1 |
| RE | RE | Todd County Soil & Water | 10/2025 | 148214 | 10/22/2025 | 222 | | 4,884.00 - | Shoreland Proj Reimb - Aitkin | | | | 1 |
| | | | 79-603-526-0000-5801 - MISC REVENUE: MISS-BRAINERD CWMP | | | | | 13,001.28 - | | | | | |
| | | | 79-603-526-0000-6806 - ADMINISTRATION EXP-MISS-BRAINERD CWI | | | | | | | | | | |
| JE | JE | Q3 2025 | 10/2025 | 20542 | 10/31/2025 | 901 | | 456.63 | SWCD Wage Reimb | | | | 1 |
| | | | 79-603-526-0000-6806 - ADMINISTRATION EXP-MISS-BRAINERD | | | | | 456.63 | | | | | |
| | | | 79-603-526-0000-6807 - COST SHARE EXP:MISS-BRAINERD CWMP IM | | | | | | | | | | |
| DI | DI | 10207-BAUM JR/RICK | 10/2025 | 245265 | 10/13/2025 | 333 | | 1,302.54 | Cost Share - Cover Crop | | | | 1 |
| DI | DI | 17690-HULINSKY/GREG | 10/2025 | 245281 | 10/13/2025 | 333 | | 1,340.06 | Cost Share Payment | | | | 1 |
| DI | DI | 18037-ABRAHAMSON/ADAM AND MARIA | 10/2025 | 245307 | 10/20/2025 | 333 | | 1,109.25 | Cost Share Payment for FSP | | | | 1 |
| DI | DI | 18041-METTLER/LAWRENCE | 10/2025 | 245333 | 10/20/2025 | 333 | | 588.69 | Cost Share Payment - FSP | | | | 1 |
| DI | DI | 18044-ZANDER/JASON AND HEATHER | 10/2025 | 245347 | 10/20/2025 | 333 | | 17,329.00 | Cost Share - Shoreline Project | | | | 1 |
| | | | 79-603-526-0000-6807 - COST SHARE EXP:MISS-BRAINERD CWMP | | | | | 21,669.54 | | | | | |
| | | | 79-603-526-0000-6849 - TECHNICAL ASSIST.EXP:MISS-BRAINERD CW | | | | | | | | | | |
| JE | JE | Q3 2025 | 10/2025 | 20542 | 10/31/2025 | 901 | | 4,112.97 | SWCD Wage Reimb | | | | 1 |
| | | | 79-603-526-0000-6849 - TECHNICAL ASSIST.EXP:MISS-BRAINERD | | | | | 4,112.97 | | | | | |
| | | | PROGRAM 526 - C24-0198 MISS-BRAINERD CWMP IMPLEMENTATI | | | | | 13,237.86 | | | | | |
| | | | PROGRAM 527 - P25-0558 SOIL HEALTH DELIVERY | | | | | | | | | | |
| | | | 79-603-527-0000-6810 - PRJ DEVELOPMENT EXP:P25-0558SOIL HLT | | | | | | | | | | |
| DI | DI | 8965-ECM PUBLISHERS INC | 10/2025 | 245235 | 10/06/2025 | 333 | | 195.00 | Soil Health & Grazing Event | 1066992 | | | 1 |



| SC | Tran Type | Vendor | G/L Mont | Receipt/Warrant NUMBER DATE | Seq | AMOUNT | Description / Service Dates | Invoice Number | Accr Cd | Basis | R1R2 |
|----|-----------|---|----------|-----------------------------|-----|-----------|--------------------------------|----------------|---------|-------|------|
| | | 79-603-527-0000-6810 - PRJ DEVELOPMENT EXP:P25-0558SOIL HLT | | | | | | | | | |
| DI | DI | 9594-US BANK | 10/2025 | 1140 10/22/2025 | 333 | 35.94 | Caseys-Ice-Soil Health Fld Day | | | | 1 |
| JE | JE | Q3 2025 | 10/2025 | 20542 10/31/2025 | 901 | 534.31 | SWCD Wage Reimb | | | | 1 |
| | | 79-603-527-0000-6810 - PRJ DEVELOPMENT EXP:P25-0558SOIL Total | | | | | | | | | |
| | | 79-603-527-0000-6849 - TECHNICAL ASSIST.EXP:P25-0558 SOIL HLT | | | | | | | | | |
| JE | JE | Q3 2025 | 10/2025 | 20542 10/31/2025 | 901 | 1,943.31 | SWCD Wage Reimb | | | | 1 |
| | | 79-603-527-0000-6849 - TECHNICAL ASSIST.EXP:P25-0558 SOIL Total | | | | | | | | | |
| | | PROGRAM 527 - P25-0558 SOIL Total | | | | | | | | | |
| | | HEALTH DELIVERY | | | | | | | | | |
| | | PROGRAM 528 - C25-0196 LONG PRAIRIE | | | | | | | | | |
| | | COLLABTV FY25 WBIF | | | | | | | | | |
| | | 79-603-528-0000-6806 - ADMINISTRATION EXP-C25-0196 LP COLLA | | | | | | | | | |
| DI | DI | 9900-MORRISON SWCD | 10/2025 | 245289 10/13/2025 | 333 | 256.57 | Q3 Administrative Hours | LPWBIF2504 | | | 1 |
| JE | JE | Q3 2025 | 10/2025 | 20542 10/31/2025 | 901 | 364.72 | SWCD Wage Reimb | | | | 1 |
| | | 79-603-528-0000-6806 - ADMINISTRATION EXP-C25-0196 LP Total | | | | | | | | | |
| | | 79-603-528-0000-6807 - COST SHARE EXP-C25-0196 LP COLLABOR | | | | | | | | | |
| DI | DI | 20195-TODD CO PLANNING & ZONING | 10/2025 | 245300 10/13/2025 | 333 | 2,461.25 | Reimb: Septic Replacement Proj | | | | 1 |
| | | 79-603-528-0000-6807 - COST SHARE EXP-C25-0196 LP Total | | | | | | | | | |
| | | 79-603-528-0000-6810 - PRJ DEVELOPMENT EXP-C25-0196 LP COLL | | | | | | | | | |
| DI | DI | 11431-DOUGLAS SWCD | 10/2025 | 245234 10/06/2025 | 333 | 13,801.31 | Proj Development Hrs - Q2 2025 | 7-2025-2 | | | 1 |
| DI | DI | 18019-MORRISON COUNTY PLANNING AND ZONING | 10/2025 | 245244 10/06/2025 | 333 | 738.80 | Morrison County Staff Time | INV #1 | | | 1 |
| DI | DI | 18019-MORRISON COUNTY PLANNING AND ZONING | 10/2025 | 245244 10/06/2025 | 333 | 1,367.82 | Mailer Production & Postage | INV #1 | | | 1 |
| DI | DI | 9900-MORRISON SWCD | 10/2025 | 245289 10/13/2025 | 333 | 2,841.00 | Q3 Project Development Hours | LPWBIF2504 | | | 1 |
| JE | JE | Q3 2025 | 10/2025 | 20542 10/31/2025 | 901 | 267.16 | SWCD Wage Reimb | | | | 1 |
| | | 79-603-528-0000-6810 - PRJ DEVELOPMENT EXP-C25-0196 LP Total | | | | | | | | | |
| | | 79-603-528-0000-6849 - TECHNICAL ASSIST.EXP-C25-0196 LP COLL | | | | | | | | | |
| JE | JE | Q3 2025 | 10/2025 | 20542 10/31/2025 | 901 | 1,582.80 | SWCD Wage Reimb | | | | 1 |
| | | 79-603-528-0000-6849 - TECHNICAL ASSIST.EXP-C25-0196 LP Total | | | | | | | | | |
| | | 79-603-528-0000-6872 - GRANTS-C25-0196 LP COLLABORATIVE FY | | | | | | | | | |
| DI | DI | 14660-ZASTROW/MARK | 10/2025 | 245348 10/20/2025 | 333 | 5,505.86 | Incentive Payment | | | | 1 |
| | | 79-603-528-0000-6872 - GRANTS-C25-0196 LP COLLABORATIVE Total | | | | | | | | | |
| | | PROGRAM 528 - C25-0196 LONG PRAIRIE COLLABTV FY25 WBIF Total | | | | | | | | | |
| | | 29,187.29 | | | | | | | | | |

SARAHK

11/6/25 9:08AM

Fund 79 - TODD SOIL & WATER AGENCY FU

**** **Todd County** ****

ACCOUNT ACTIVITY REPORT

From: 10/01/2025 Thru: 10/31/2025

Page 7

Report Basis: 1



| SC | Tran Type | Vendor | G/L Mont | Receipt/Warrant NUMBER DATE | Seq | AMOUNT | Description / Service Dates | Invoice Number | Accr Cd | Basis | R1R2 |
|----|--------------|--|-------------|--------------------------------|-------|-----------|--------------------------------|-------------------|------------|-------|------|
| | | PROGRAM 529 - P25-0648 2025 BUFFER LAW IMPLEMENTATION | | | | | | | | | |
| | | 79-603-529-0000-6845 - PROGRAM EXP-P25-0648 2025 BUFFER LAI | | | | | | | | | |
| JE | JE | Q3 2025 | 10/2025 | 20542 10/31/2025 | 901 | 7,715.01 | SWCD Wage Reimb | | | | 1 |
| | | 79-603-529-0000-6845 - PROGRAM EXP-P25-0648 2025 BUFFER | | | Total | 7,715.01 | | | | | |
| | | PROGRAM 529 - P25-0648 2025 BUFFER LAW IMPLEMENTATION | | | Total | 7,715.01 | | | | | |
| | | PROGRAM 537 - C24-0088 SAUK RIVER WATERSHED WBIF | | | | | | | | | |
| | | 79-603-537-0000-6807 - COST SHARE EXP-C24-0088 SAUK RIVER W | | | | | | | | | |
| DI | DI | 18042-MAYER/JEFFREY AND CAROL | 10/2025 | 245332 10/20/2025 | 333 | 3,718.86 | Cost Share - Shoreline Project | | | | 1 |
| | | 79-603-537-0000-6807 - COST SHARE EXP-C24-0088 SAUK | | | Total | 3,718.86 | | | | | |
| | | 79-603-537-0000-6810 - PRJ DEV EXP-C24-0088 SAUK RIVER WBIF | | | | | | | | | |
| JE | JE | Q3 2025 | 10/2025 | 20542 10/31/2025 | 901 | 2,356.38 | SWCD Wage Reimb | | | | 1 |
| | | 79-603-537-0000-6810 - PRJ DEV EXP-C24-0088 SAUK RIVER | | | Total | 2,356.38 | | | | | |
| | | 79-603-537-0000-6849 - TECHNICAL ASSIST.EXP-C24-0088 SR WBIF | | | | | | | | | |
| JE | JE | Q3 2025 | 10/2025 | 20542 10/31/2025 | 901 | 7,604.15 | SWCD Wage Reimb | | | | 1 |
| | | 79-603-537-0000-6849 - TECHNICAL ASSIST.EXP-C24-0088 SR | | | Total | 7,604.15 | | | | | |
| | | PROGRAM 537 - C24-0088 SAUK RIVER WATERSHED WBIF | | | Total | 13,679.39 | | | | | |
| | | PROGRAM 538 - C25-0118 RED EYE WATERSHED IMLEM GRANT | | | | | | | | | |
| | | 79-603-538-0000-6806 - ADMIN EXP-C25-0118 RED EYE WTR IMP GI | | | | | | | | | |
| JE | JE | Q3 2025 | 10/2025 | 20542 10/31/2025 | 901 | 1,099.79 | SWCD Wage Reimb | | | | 1 |
| | | 79-603-538-0000-6806 - ADMIN EXP-C25-0118 RED EYE WTR | | | Total | 1,099.79 | | | | | |
| | | 79-603-538-0000-6849 - TECH ASSIST.EXP-C25-0118 RED EYE WTR | | | | | | | | | |
| JE | JE | Q3 2025 | 10/2025 | 20542 10/31/2025 | 901 | 715.32 | SWCD Wage Reimb | | | | 1 |
| | | 79-603-538-0000-6849 - TECH ASSIST.EXP-C25-0118 RED EYE | | | Total | 715.32 | | | | | |
| | | PROGRAM 538 - C25-0118 RED EYE WATERSHED IMLEM GRANT | | | Total | 1,815.11 | | | | | |
| | | PROGRAM 541 - C25-0169 TIER ONE: BIG SWAN LAKE PHOS RE | | | | | | | | | |
| | | 79-603-541-0000-6806 - ADMIN EXP-C25-0169 T1:BIG SWAN LAKE F | | | | | | | | | |
| JE | JE | Q3 2025 | 10/2025 | 20542 10/31/2025 | 901 | 572.48 | SWCD Wage Reimb | | | | 1 |
| | | 79-603-541-0000-6806 - ADMIN EXP-C25-0169 T1:BIG SWAN | | | Total | 572.48 | | | | | |
| | | 79-603-541-0000-6807 - COST SHARE EXP:C25-0169 T1:BIG SWAN L | | | | | | | | | |



| SC | Tran Type | Vendor | G/L Mont | Receipt/Warrant NUMBER DATE | Seq | AMOUNT | Description / Service Dates | Invoice Number | Accr Cd | Basis | R1R2 |
|----|-----------|---|----------|-----------------------------|-----|------------|-----------------------------|----------------|---------|-------|------|
| | | 79-603-541-0000-6807 - COST SHARE EXP:C25-0169 T1:BIG SWAN L | | | | | | | | | |
| DI | DI | 14098-BIG SWAN LAKE IMPROVEMENT ASSOCIATION | 10/2025 | 245268 10/13/2025 | 333 | 231,804.00 | Cost Share Payment | Invoice #2 | | | 1 |
| DI | DI | 14098-BIG SWAN LAKE IMPROVEMENT ASSOCIATION | 10/2025 | 245268 10/13/2025 | 333 | 1,530.00 | Cost Share Payment | Invoice #2 | | | 1 |
| | | 79-603-541-0000-6807 - COST SHARE EXP:C25-0169 T1:BIG | | | | Total | 233,334.00 | | | | |
| | | 79-603-541-0000-6810 - PRJ DEV EXP-C25-0169 T1:BIG SWAN PHOS | | | | | | | | | |
| DI | DI | 13397-ANTON/DEJA | 10/2025 | 59235 10/10/2025 | 333 | 18.32 | Sandisk 64GB Card | | | | 1 |
| JE | JE | Q3 2025 | 10/2025 | 20542 10/31/2025 | 901 | 152.66 | SWCD Wage Reimb | | | | 1 |
| | | 79-603-541-0000-6810 - PRJ DEV EXP-C25-0169 T1:BIG SWAN | | | | Total | 170.98 | | | | |
| | | 79-603-541-0000-6849 - TECH ASSIST EXP-C25-0169 T1:BIG SWAN L | | | | | | | | | |
| JE | JE | Q3 2025 | 10/2025 | 20542 10/31/2025 | 901 | 1,149.29 | SWCD Wage Reimb | | | | 1 |
| | | 79-603-541-0000-6849 - TECH ASSIST EXP-C25-0169 T1:BIG | | | | Total | 1,149.29 | | | | |
| | | PROGRAM 541 - C25-0169 TIER ONE: BIG SWAN LAKE PHOS | | | | Total | 235,226.75 | | | | |
| | | RE | | | | | | | | | |
| | | PROGRAM 542 - 2026 SOIL HEALTH PRACTICES | | | | | | | | | |
| | | 79-603-542-0000-6849 - TECHNICAL ASSIST.EXP-2026 SOIL HEALTH | | | | | | | | | |
| JE | JE | Q3 2025 | 10/2025 | 20542 10/31/2025 | 901 | 709.39 | SWCD Wage Reimb | | | | 1 |
| | | 79-603-542-0000-6849 - TECHNICAL ASSIST.EXP-2026 SOIL | | | | Total | 709.39 | | | | |
| | | PROGRAM 542 - 2026 SOIL HEALTH PRACTICES | | | | Total | 709.39 | | | | |
| | | PROGRAM 543 - P25-0821 MN GRANT 2025 CRP STATE INC-SRW | | | | | | | | | |
| | | 79-603-543-0000-6872 - GRANTS-P25-0821CRP INC PROG-SAUK RI | | | | | | | | | |
| DI | DI | 6401-CIPALA/GREGORY | 10/2025 | 245319 10/20/2025 | 333 | 4,959.00 | Incentive Payment | | | | 1 |
| DI | DI | 9450-WILLIAMSON/THOMAS | 10/2025 | 905453 10/20/2025 | 333 | 15,000.00 | Incentive Payment | | | | 1 |
| DI | DI | 18046-WINTER/ROBERT | 10/2025 | 245346 10/20/2025 | 333 | 972.00 | Incentive Payment | | | | 1 |
| DI | DI | 18055-KREBSBACH/ALEX | 10/2025 | 245362 10/27/2025 | 333 | 217.00 | Incentive Payment | | | | 1 |
| | | 79-603-543-0000-6872 - GRANTS-P25-0821CRP INC PROG-SAUK | | | | Total | 21,148.00 | | | | |
| | | PROGRAM 543 - P25-0821 MN GRANT 2025 CRP STATE INC-SRW | | | | Total | 21,148.00 | | | | |
| | | PROGRAM 545 - CROW WING RIVER WATERSHED CWMP PHASE I | | | | | | | | | |
| | | 79-603-545-0000-6806 - ADMIN EXP-C25-0310 CROW WING CWMP F | | | | | | | | | |
| JE | JE | Q3 2025 | 10/2025 | 20542 10/31/2025 | 901 | 65.04 | SWCD Wage Reimb | | | | 1 |



| SC | Tran Type | Vendor | G/L Mont | Receipt/Warrant NUMBER | DATE | Seq | AMOUNT | Description / Service Dates | Invoice Number | Accr Cd | Basis | R1R2 |
|----|-----------|--|----------|------------------------|------------|-------|-----------|--------------------------------|----------------|---------|-------|------|
| | | 79-603-545-0000-6806 - ADMIN EXP-C25-0310 CROW WING | | | | Total | 65.04 | | | | | |
| | | 79-603-545-0000-6807 - COST SHARE EXP-C25-0310 CROW WING C' | | | | | | | | | | |
| DI | DI | 18034-HANSON/DAVEN | 10/2025 | 245280 | 10/13/2025 | 333 | 868.50 | Cost Share Payment | | | | 1 |
| | | 79-603-545-0000-6807 - COST SHARE EXP-C25-0310 CROW | | | | Total | 868.50 | | | | | |
| | | 79-603-545-0000-6810 - PRJ DEV EXP-C25-0310 CROW WING CWMP | | | | | | | | | | |
| JE | JE | Q3 2025 | 10/2025 | 20542 | 10/31/2025 | 901 | 168.25 | SWCD Wage Reimb | | | | 1 |
| | | 79-603-545-0000-6810 - PRJ DEV EXP-C25-0310 CROW WING | | | | Total | 168.25 | | | | | |
| | | PROGRAM 545 - CROW WING RIVER WATERSHED CWMP PHASE I | | | | Total | 1,101.79 | | | | | |
| | | PROGRAM 551 - FEEDLOT | | | | | | | | | | |
| | | 79-603-551-0000-6845 - PROGRAM EXPENSE (FEEDLOT) | | | | | | | | | | |
| JE | JE | Q3 2025 | 10/2025 | 20542 | 10/31/2025 | 901 | 51,825.88 | SWCD Wage Reimb | | | | 1 |
| | | 79-603-551-0000-6845 - PROGRAM EXPENSE (FEEDLOT) | | | | Total | 51,825.88 | | | | | |
| | | PROGRAM 551 - FEEDLOT Total | | | | | 51,825.88 | | | | | |
| | | PROGRAM 559 - SOIL HEALTH PRACTITIONER PSTN C24-0174 | | | | | | | | | | |
| | | 79-603-559-0000-6806 - ADMIN EXP-SOIL HEALTH PRACTITIONER | | | | | | | | | | |
| DI | DI | 9594-US BANK | 10/2025 | 1140 | 10/22/2025 | 333 | 212.60 | Craguns-BWSR Trng-Soil Health | | | | 1 |
| JE | JE | Q3 2025 | 10/2025 | 20540 | 10/31/2025 | 901 | 115.66 | GrantAllowedDirectChgsSoilHlth | | | | 1 |
| JE | JE | Q3 2025 | 10/2025 | 20542 | 10/31/2025 | 901 | 1,101.14 | SWCD Wage Reimb | | | | 1 |
| | | 79-603-559-0000-6806 - ADMIN EXP-SOIL HEALTH | | | | Total | 1,429.40 | | | | | |
| | | 79-603-559-0000-6849 - TECHNICAL ASSIST.EXP-SOIL HEALTH PRAC | | | | | | | | | | |
| JE | JE | Q3 2025 | 10/2025 | 20542 | 10/31/2025 | 901 | 26,884.31 | SWCD Wage Reimb | | | | 1 |
| | | 79-603-559-0000-6849 - TECHNICAL ASSIST.EXP-SOIL HEALTH | | | | Total | 26,884.31 | | | | | |
| | | PROGRAM 559 - SOIL HEALTH PRACTITIONER PSTN C24-0174 | | | | Total | 28,313.71 | | | | | |
| | | PROGRAM 563 - LOCAL WATER MNG GRANT | | | | | | | | | | |
| | | 79-603-563-0000-6845 - PROGRAM EXPENSE (LOCAL WTR MNG) | | | | | | | | | | |
| DI | DI | 11166-SCIENCE MUSEUM OF MN | 10/2025 | 245340 | 10/20/2025 | 333 | 1,005.00 | Enviro Fest - Water Plan | #INV1295 | | | 1 |
| DI | DI | 9594-US BANK | 10/2025 | 1140 | 10/22/2025 | 333 | 35.94 | Casey's - Ice - Enviro Fest | | | | 1 |
| DI | DI | 9594-US BANK | 10/2025 | 1140 | 10/22/2025 | 333 | 43.92 | Coborns - Enviro Fest Supplies | | | | 1 |
| DI | DI | 9594-US BANK | 10/2025 | 1140 | 10/22/2025 | 333 | 114.11 | Walmart - Enviro Fest Supplies | | | | 1 |



| SC | Tran Type | Vendor | G/L Mont | Receipt/Warrant NUMBER DATE | Seq | AMOUNT | Description / Service Dates | Invoice Number | Accr Cd | Basis | R1R2 |
|----|-----------|---|----------|-----------------------------|-----|-----------|--------------------------------|----------------|---------|-------|------|
| | | 79-603-563-0000-6845 - PROGRAM EXPENSE (LOCAL WTR MNG) | | | | | | | | | |
| DI | DI | 9594-US BANK | 10/2025 | 1140 10/22/2025 | 333 | 29.49 | Coborns - Enviro Fest Supplies | | | | 1 |
| DI | DI | 9697-JOHN DEERE FINANCIAL | 10/2025 | 245361 10/27/2025 | 333 | 49.73 | Enviro Fest Supplies | F66355 | | | 1 |
| JE | JE | Q3 2025 | 10/2025 | 20542 10/31/2025 | 901 | 9,615.11 | SWCD Wage Reimb | | | | 1 |
| JE | JE | Q3 2025 | 10/2025 | 20542 10/31/2025 | 901 | 1,512.60 | SWCD Wage Reimb | | | | 1 |
| | | 79-603-563-0000-6845 - PROGRAM EXPENSE (LOCAL WTR MNG) | | | | Total | 12,405.90 | | | | |
| | | PROGRAM 563 - LOCAL WATER MNG GRANT | | | | Total | 12,405.90 | | | | |
| | | PROGRAM 564 - WCA GRANT | | | | | | | | | |
| | | 79-603-564-0000-6845 - PROGRAM EXPENSE (WCA) | | | | | | | | | |
| JE | JE | Q3 2025 | 10/2025 | 20542 10/31/2025 | 901 | 18,860.55 | SWCD Wage Reimb | | | | 1 |
| | | 79-603-564-0000-6845 - PROGRAM EXPENSE (WCA) | | | | Total | 18,860.55 | | | | |
| | | PROGRAM 564 - WCA GRANT | | | | Total | 18,860.55 | | | | |
| | | PROGRAM 567 - BWSR COST SHARE GRANT | | | | | | | | | |
| | | 79-603-567-0000-6807 - COST SHARE EXP | | | | | | | | | |
| DI | DI | 18040-JULIG/JAMES | 10/2025 | 245328 10/20/2025 | 333 | 1,653.38 | Cost Share Payment | | | | 1 |
| | | 79-603-567-0000-6807 - COST SHARE EXP | | | | Total | 1,653.38 | | | | |
| | | PROGRAM 567 - BWSR COST SHARE GRANT | | | | Total | 1,653.38 | | | | |
| | | PROGRAM 571 - OB WELL MONITORING GRANT | | | | | | | | | |
| | | 79-603-571-0000-6845 - PROGRAM/PROJECT EXP | | | | | | | | | |
| JE | JE | Q3 2025 | 10/2025 | 20542 10/31/2025 | 901 | 2,340.00 | SWCD Wage Reimb | | | | 1 |
| | | 79-603-571-0000-6845 - PROGRAM/PROJECT EXP | | | | Total | 2,340.00 | | | | |
| | | PROGRAM 571 - OB WELL MONITORING GRANT | | | | Total | 2,340.00 | | | | |
| | | PROGRAM 583 - COUNTY RIPARIAN AID | | | | | | | | | |
| | | 79-603-583-0000-6807 - COST SHARE EXP-COUNTY RIPARIAN AID | | | | | | | | | |
| DI | DI | 17794-VARNER/JOE | 10/2025 | 245301 10/13/2025 | 333 | 21,861.85 | Cost Share Payment | | | | 1 |
| | | 79-603-583-0000-6807 - COST SHARE EXP-COUNTY RIPARIAN | | | | Total | 21,861.85 | | | | |
| | | 79-603-583-0000-6845 - PROJ/PROG EXP-COUNTY RIPARIAN AID | | | | | | | | | |
| JE | JE | Q3 2025 | 10/2025 | 20542 10/31/2025 | 901 | 5,526.19 | SWCD Wage Reimb | | | | 1 |
| | | 79-603-583-0000-6845 - PROJ/PROG EXP-COUNTY RIPARIAN AID | | | | Total | 5,526.19 | | | | |
| | | PROGRAM 583 - COUNTY RIPARIAN AID | | | | Total | 27,388.04 | | | | |



| SC | Tran Type | Vendor | G/L Mont | Receipt/Warrant NUMBER | DATE | Seq | AMOUNT | Description / Service Dates | Invoice Number | Accr Cd | Basis | R1R2 |
|----|-----------|--|----------|------------------------|------------|-------|------------|--------------------------------|----------------|---------|-------|------|
| | | PROGRAM 584 - GENERAL COUNTY ALLOCATION | | | | | | | | | | |
| | | 79-603-584-0000-6845 - EXPENSE-GENERAL CO ALLOC(FEEDLOTS & | | | | | | | | | | |
| JE | JE | Q3 2025 | 10/2025 | 20542 | 10/31/2025 | 901 | 5,000.00 | SWCD Wage Reimb | | | | 1 |
| | | 79-603-584-0000-6845 - EXPENSE-GENERAL CO ALLOC | | | | Total | 5,000.00 | | | | | |
| | | PROGRAM 584 - GENERAL COUNTY ALLOCATION | | | | Total | 5,000.00 | | | | | |
| | | PROGRAM 586 - AIS PROGRAM | | | | | | | | | | |
| | | 79-603-586-0000-6845 - PROGRAM/PROJECT EXP-AIS PROGRAM | | | | | | | | | | |
| DI | DI | 17570-WATERGUARDS LLC | 10/2025 | 905443 | 10/13/2025 | 333 | 6,783.00 | Inspection Hours - September | Todd 25-09 | | | 1 |
| DI | DI | 17570-WATERGUARDS LLC | 10/2025 | 905443 | 10/13/2025 | 333 | 31,454.25 | Inspection Hours - August | Todd 25-08 | | | 1 |
| JE | JE | Q3 2025 | 10/2025 | 20542 | 10/31/2025 | 901 | 343.49 | SWCD Wage Reimb | | | | 1 |
| | | 79-603-586-0000-6845 - PROGRAM/PROJECT EXP-AIS PROGRAM | | | | Total | 38,580.74 | | | | | |
| | | PROGRAM 586 - AIS PROGRAM | | | | Total | 38,580.74 | | | | | |
| | | PROGRAM 592 - MAWQCP-AG WATER PROGRAM | | | | | | | | | | |
| | | 79-603-592-0000-5801 - MISC REV-MAWQCP-AG WATER PROGRAM | | | | | | | | | | |
| RE | RE | Todd County Soil & Water | 10/2025 | 148214 | 10/22/2025 | 222 | 1,734.86 - | Ag Water - Reimb 2025 Q3 - Ste | | | | 1 |
| | | 79-603-592-0000-5801 - MISC REV-MAWQCP-AG WATER | | | | Total | 1,734.86 - | | | | | |
| | | 79-603-592-0000-6845 - PROGRAM/PROJECT EXP-MAWQCP-AG WA | | | | | | | | | | |
| JE | JE | Q3 2025 | 10/2025 | 20542 | 10/31/2025 | 901 | 1,734.86 | SWCD Wage Reimb | | | | 1 |
| | | 79-603-592-0000-6845 - PROGRAM/PROJECT EXP-MAWQCP-AG | | | | Total | 1,734.86 | | | | | |
| | | PROGRAM 592 - MAWQCP-AG WATER PROGRAM | | | | Total | 0.00 | | | | | |
| | | PROGRAM 593 - WCTSA-REG NUTRIENT MGMT SPECIALIST | | | | | | | | | | |
| | | 79-603-593-0000-6845 - PROGRAM/PROJ EXP-WCTSA-REG NUTR MC | | | | | | | | | | |
| JE | JE | Q3 2025 | 10/2025 | 20539 | 10/31/2025 | 901 | 369.60 | Wage Reimb: Nutrient Mgmnt | | | | 1 |
| JE | JE | Q3 2025 | 10/2025 | 20539 | 10/31/2025 | 901 | 475.00 | Wage Reimb: Nutrient Mgmnt | | | | 1 |
| JE | JE | Q3 2025 | 10/2025 | 20539 | 10/31/2025 | 901 | 7,291.95 | Wage Reimb: Nutrient Mgmnt | | | | 1 |
| | | 79-603-593-0000-6845 - PROGRAM/PROJ EXP-WCTSA-REG NUTR | | | | Total | 8,136.55 | | | | | |
| | | PROGRAM 593 - WCTSA-REG NUTRIENT MGMT SPECIALIST | | | | Total | 8,136.55 | | | | | |
| | | PROGRAM 595 - FEEDLOT PERFORMANCE FUNDS | | | | | | | | | | |
| | | 79-603-595-0000-6845 - PROG/PROJ EXP-FEEDLOT PERFORMANCE | | | | | | | | | | |
| DI | DI | 17794-VARNER/JOE | 10/2025 | 245301 | 10/13/2025 | 333 | 13,921.65 | Cost Share Payment | | | | 1 |



| SC | Tran Type | Vendor | G/L Mont | Receipt/Warrant NUMBER | DATE | Seq | AMOUNT | Description / Service Dates | Invoice Number | Accr Cd | Basis | R1R2 |
|----|-----------|--|-------------|------------------------|------------|-------------|------------|-----------------------------|----------------|---------|-------|------|
| | | 79-603-595-0000-6845 - PROG/PROJ EXP-FEEDLOT PERFORMANCE | | | | | | | | | | |
| DI | DI | 18040-JULIG/JAMES | 10/2025 | 245328 | 10/20/2025 | 333 | 6,025.82 | Cost Share Payment | | | | 1 |
| | | 79-603-595-0000-6845 - PROG/PROJ EXP-FEEDLOT | | | | | Total | 19,947.47 | | | | |
| | | PROGRAM 595 - FEEDLOT | | | | | Total | 19,947.47 | | | | |
| | | PERFORMANCE FUNDS | | | | | | | | | | |
| | | PROGRAM 599 - SAUK RIVER 1W1P | | | | | | | | | | |
| | | 79-603-599-0000-6849 - TECH ASSIST EXP-SAUK RIVER 1W1P | | | | | | | | | | |
| JE | JE | Q3 2025 | 10/2025 | 20542 | 10/31/2025 | 901 | 152.66 | SWCD Wage Reimb | | | | 1 |
| | | 79-603-599-0000-6849 - TECH ASSIST EXP-SAUK RIVER 1W1P | | | | | Total | 152.66 | | | | |
| | | PROGRAM 599 - SAUK RIVER 1W1P | | | | | Total | 152.66 | | | | |
| | | DEPT 603 - S&W (FEEDLOT-CO MATCH) | | | | | Total | 648,631.88 | | | | |
| | | Fund 79 - TODD SOIL & WATER AGENCY FUND | | | | | Total | 648,631.88 | | | | |
| | | 115 Transactions | 64 Accounts | | | Final Total | 648,631.88 | | | | | |



Brian Grundtner- Forest Mgmt Plan

Location Information

| | |
|---------------------------|----------------------|
| Parcel Number | 05-0001201 |
| Township Name | Burleene |
| TWP, Range, Section | 130-35-2 |
| Watershed | Long Prairie |
| Minor Watershed | 14015 Eagle Creek |
| Enter Project Coordinates | 46.097847 -95.036582 |

Project Information

| | |
|------------------------|------------------------------------|
| Project Type | Ecological |
| Practice Types | FSP |
| Project Codes | 106 |
| Field Technicians | Anton |
| Engineering Assistance | Erik Eggen, Timberlane Forestry |

POA Targeted Initiative: **Soil Profiles: Protect Land Productivity with Effective Soil and Nutrient Management**

Resource Concern and Project Purpose Description

Over the years, the upper Long Prairie River Watershed has lost capital in existing healthy forests. We know that having healthy forests on the landscape gives the soil decades long a reprieve while building organic matter, vital macro and micro nutrients, and microbiomes to replenish our soils as a natural resource to farmers in the future, residents (both human and wild) and offering recreational value to the area. Healthy forests and soils are also necessary for carbon sequestration and water quality.

Alternative Conservation or Management Practice(s) Considered

Alternative solutions were weighed regarding cost analysis, practicality of install, material availability, longevity, maintenance requirements, and effective resolution of cause. The owner could do nothing and allow the trees to work through their natural process, decay, fall down- leaving inefficient periods of habitat reduction and lack of carbon sequestration and water quality cleansing. Mature trees provide limited habitat and are unable to sequester carbon like a growing forest. The owner could clear cut the forest for profit. The landowner could develop the property. Forest management is the most cost-effective protection of land value in the long term, but is not the most easy or cost beneficial in the present. We are thankful for landowners like these who are willing to properly manage their forests into health for the benefit of many.

Funding Information:

| Forester Name & Bid | Cost Share % | Encumber Amount |
|----------------------------|--------------|-----------------|
| Timberlane Forestry \$1100 | 75 | \$825 |

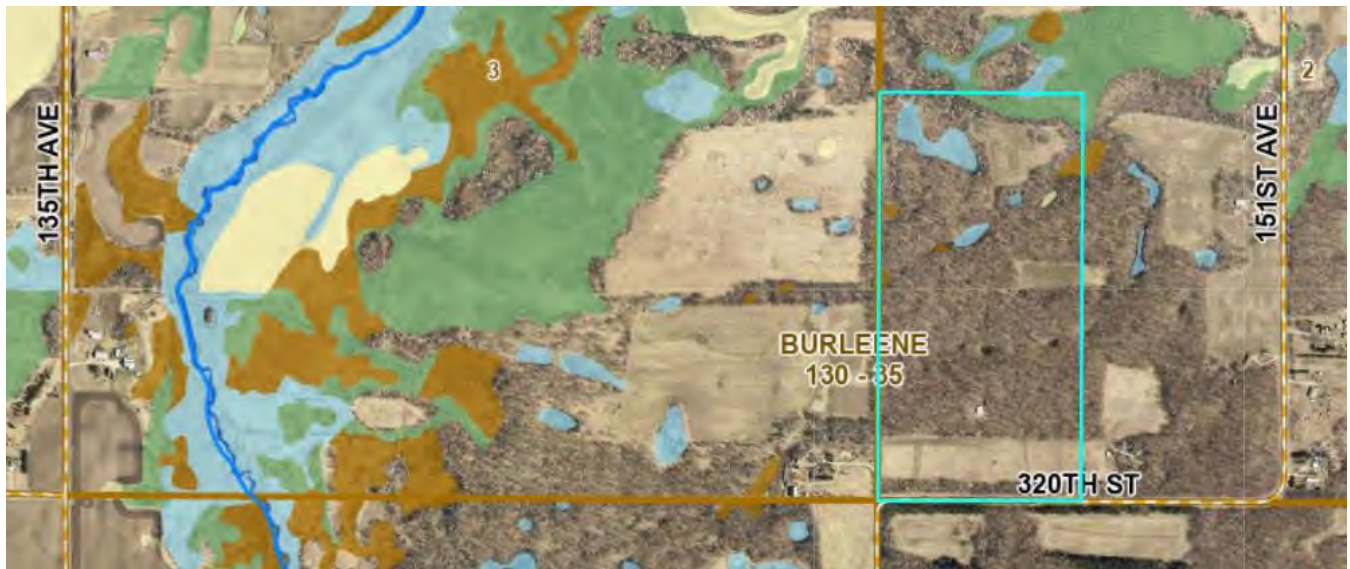
| | | | |
|-------------------|------------------|---------------------------|-----|
| Final Invoice (s) | TBD | Cost Share Payment Amount | TBD |
| Funding Source | FY23 LP LCCMR | TBD | |
| | Landowner Amount | TBD | |

Todd SWCD Mission Statement: Conservation, Protection, and Enhancement of Todd County's Natural Resources

Enter Project Name, Encumbering or Payment, submitted by, Board Meeting Date 2024.10.10.

Reductions

| | Before | After | Reduction Notes |
|--------------|---------------|--------------|------------------------|
| Nitrogen | 5.2 lbs/yr | # or NA. | BWSR FERN |
| Sediment/TSS | .25 lbs/yr | #or NA | |
| Phosphorus | .39 lbs/yr | # or NA. | |



Todd SWCD Mission Statement: Conservation, Protection, and Enhancement of Todd County's Natural Resources

Enter Project Name, Encumbering or Payment, submitted by, Board Meeting Date 2024.10.10.

Contract Amendment Form

| | | | |
|---|---|---|--|
| Organization: <div style="text-align: center;">Todd SWCD</div> | Contract Number: <div style="text-align: center;">2024.07.11-3.2</div> | Amendment Number: <div style="text-align: center;">2</div> | Amendment Type Date <input checked="" type="checkbox"/> Amount <input type="checkbox"/> Land Occupier <input type="checkbox"/> Practice <input type="checkbox"/> |
| | | Approval Date: <div style="text-align: center;">11/14/24</div> | |

State Grant Agreement Expiration Date: _____

| | |
|--|--|
| Original Contract Install Date: <u>December 1, 2024</u> | Amended Contract Install Date: <u>November 1, 2026</u> |
| Original Total Amount Authorized: <u>\$6,000.00</u> | Amended Total Amount Authorized: <u>N/A</u> |
| Original Land Occupier/Landowner: <u>Osakis Country Club, Inc.</u> | Amended Land Occupier/Landowner: <u>N/A</u> |
| Original Practice: <u>Wetland Restorations</u> | Amended Practice: <u>N/A</u> |

The Parties whose names are signed below hereby agree that the above-referenced Conservation Practice Assistance Contract is amended as follows:

The original contract installation date was set for December 1, 2024. Due to abnormally saturated conditions and time constraints, the project was not completed by the original contract deadline. A contract extension into 2025 was approved for December 1, 2025. However, due to lack of USFWS funding in 2025, the project was not completed and will need another extension into 2026 (final year of the grant).

The original contract, as numbered, shall remain in full force and effect, except for those changes made necessary by the amendment.

This amendment is to take affect on the date of the last signature hereto.

| | |
|------|--|
| Date | |
| Date | |

Technical Assessment

I have the appropriate technical expertise and have reviewed the proposed amendment and deem the changes necessary.

| | |
|------|--|
| Date | |
|------|--|

Organizational Approval

| | |
|---------------|--|
| Approval Date | |
|---------------|--|

*Attach this form to the Conservation Practice Assistance Contract



Big Swan Lake Phosphorus Reduction Alum Treatment Project 3rd Payout

Location Information

| | |
|------------------------|-----------------------|
| Project Type | Ecological/Engineered |
| Practice Types | Alum Treatment |
| Field Technicians | Anton- BWSR Grant |
| Engineering Assistance | Barr Engineering |

Project Information

POA Targeted Initiative: **Hard Surfaces, More Water: Protect Surface Waters through Cost-share Practices**

Resource Concern and Project Purpose Description

The Big Swan Lake Improvement District, RMB Labs and Lake Restoration and now Barr Engineering have put together a proposal to reduce annual internal phosphorus loading in Big Swan Lake, Todd County- Minnesota- by 80% through a two year split application alum treatment on 95 acres within the lake. This reduction combined with lakeshed conservation projects overseen by the Todd Soil and Water Conservation District (SWCD) will meet the ten year water quality milestone established by the most recent Minnesota Pollution Control Agency (MPCA) "Total Maximum Daily Limit (TMDL)" study. Big Swan Lake is "barely impaired" for phosphorous, meaning it is fixable. The point of this grant is for the alum treatment to buy time, placing phosphorus from internal loading on a hold pattern while we aggressively repair shorelines and upland loading. The goal is to remove Big Swan Lake from the impaired list for phosphorus in ten years' time. Through SWCD Board policy established specifically for this grant, the grant can provide 90% cost-share towards the cost of the alum treatments.

Alternative Conservation or Management Practice(s) Considered

Multiple alternative solutions were weighed regarding cost analysis, practicality of install, material availability, longevity, maintenance requirements, and effective resolution of cause. Request Feasibility Study from Todd SWCD for more information.

Funding Information

| High Bid & Contractor Name | Low Bid & Contractor Name | Cost Share % | Funding Amount |
|------------------------------------|--------------------------------------|--------------|----------------|
| Lakeshore Restoration \$598,400 | Barr Eng. w/Adjustments \$545,120 | 90% | \$490,608 |

Payment 1: 9/11/25

\$8,280

Payment 2: 10/9/25

\$233,334

**Second Payment
Funding Source**

Invoice 3-\$14,000 **Cost Share Payment Amount**
 FY 24 Big Swan Lake \$ 12,600
 Phosphorus Reduction
 C25-0169

Total cost-share payment to date is \$254,214

Todd SWCD Mission Statement: Conservation, Protection, and Enhancement of Todd County's Natural Resources

Big Swan Alum Treatment Request submitted by Deja Anton. 11.13.2025



SWCD

***This grant was applied for in fall of 2024 by Todd District Manager. BWSR notified Todd of the pending award of grant in late December 2024. The grant agreement was signed for execution on March 7, 2025. Budget for the Alum Treatment category is \$598, 400. Other grant categories include administration (\$1600), Project Development (\$11,000), Technical assistance and Engineering (\$14,000)

Reductions

The end plan is to completely eliminate phosphorus impairment from Big Swan Lake by the expiration of the ten-year CWMP through parallel activities, education campaigns, and project installs. However, the short-term goals for this 3-year proposal are aligned with milestones in the 2020 TMDL and WRAPS report. The milestones include reducing total phosphorus (TP) by 3,388 lbs./yr. through alum treatment, implementing shoreline BMPs to further reduce TP by at least 10 lbs./yr., and introducing Ag BMPs in the lakeshed to decrease annual TP contributions by another 208 lbs. These actions will reach the 31% milestone set by the MPCA in full.



The Alum Treatment is the greenish hue in the water. A pH meter is taken every 50 feet to make sure they are not altering the alkalinity of the water for fish and other important aquatic life.

Todd SWCD Mission Statement: Conservation, Protection, and Enhancement of Todd County's Natural Resources

Big Swan Alum Treatment Request submitted by Deja Anton. 11.13.2025

Lyle Ashbaugh Well Sealing Project

Payment Request

| Location Information | | Project Information | |
|----------------------|-------------|------------------------|-------------------------|
| Parcel Number | 02-0011000 | Project Type | Ecological |
| Township Name | Bertha | Practice Types | Well Decommissioning |
| TWP, Range, Section | 132 – 35-14 | Project Codes | 351 |
| Major Watershed | Crow Wing | Field Technicians | Deja Anton |
| Minor Watershed | 12050 | Engineering Assistance | N/A |

POA Targeted Initiative: **Hard Surfaces, More Water: Protect Surface Waters through Cost-share Practices**

Resource Concern and Project Purpose Description

The purpose of this project is to seal a well that is no longer in use on this property. This well is located approximately 457 feet from the Little Partridge River.

Alternative Conservation or Management Practice(s) Considered

Alternative solutions were weighed regarding cost analysis, practicality of install, material availability, longevity, maintenance requirements, and effective resolution of cause.

Funding Information

| Bid & Contractor Name | Cost Share % | Funding Amount |
|--|--------------|----------------|
| \$1,075 -Johnson and Son Well Drilling | 75% | \$806.25 |

| | | | |
|--------------------------|-------------------------|----------------------------------|----------|
| Final Invoice (s) | \$1,075 | Cost Share Payment Amount | \$806.25 |
| Funding Source | C25-0310 Crow Wing WBIF | Landowner Amount | 268.75 |



Todd SWCD Mission Statement: Conservation, Protection, and Enhancement of Todd County's Natural Resources

Ashbaugh Well Sealing Payment Request for 11/13/2025. Submitted by Sarah Katterhagen



Neil Zimmer Cover Crop Payout

Location Information

Parcel Number 13-0007100

Township Name Iona

TWP, Range, Section 130/34/7

Major Watershed Long Prairie

Minor Watershed 14041

Project Information

Project Type Ecological

Practice Types Cover Crop

Project Codes 340

Field Technicians Alyssa Scheve

Engineering Assistance enter name

POA Targeted Initiative: **Soil Profiles: Protect Land Productivity with Effective Soil and Nutrient Management**

Resource Concern and Project Purpose Description

Planting of winter cereal rye cover crop to prevent wind erosion and promote organic matter on 31.5 acres after corn harvest.

Alternative Conservation or Management Practice(s) Considered

Alternative solutions were weighed regarding cost analysis, practicality of install, material availability, longevity, maintenance requirements, and effective resolution of cause. The choices were do nothing (no resolution), permanent vegetative cover (not practical for crop business), and reduced tillage.

Funding Information

| High Bid & Contractor Name | Low Bid & Contractor Name | Cost Share % | Funding Amount |
|----------------------------|---------------------------|--------------|----------------|
| Enter H Bid. | \$1,902.05 | 74.4% | \$1,415.85 |

| | | | |
|--------------------------|------------------------|----------------------------------|------------|
| Final Invoice (s) | \$1,902.05 | Cost Share Payment Amount | \$1,415.85 |
| Funding Source | FY25 Soil Health Grant | | |

Reductions

| | Before | After | Reduction Notes |
|--------------|--------------|----------|--|
| Nitrogen | 2.89 lb/yr | # or NA. | MPCA watershed pollutant load reduction calculator |
| Sediment/TSS | .0067 lbs/yr | #or NA | |
| Phosphorus | .145 ton/yr | # or NA. | |





**Cover Crop was
planted on
October 1, 2025.
Cover Crop was
certified on
October 10, 2025.**





Jim Johnson Cover Crop Payout

Location Information

Parcel Number 11-0007401; 11-0007600
 Township Name Grey Eagle
 TWP, Range, Section 127/32/6
 Choose an item.
 Minor Watershed Mississippi-Brainerd

Project Information

Project Type Ecological
 Practice Types Cover Crop
 Project Codes 340
 Field Technicians Alyssa Scheve
 Engineering Assistance enter name

POA Targeted Initiative: **Soil Profiles: Protect Land Productivity with Effective Soil and Nutrient Management**

Resource Concern and Project Purpose Description

This is a cover crop planting after rye harvest on 25 acres. The cover crop will consist of oats, turnips and radish. Due to the soil type, wind erosion is the main concern. There is an intermittent stream 100' from field edge that has connectivity to Lady Lake.

Alternative Conservation or Management Practice(s) Considered

Alternative solutions were weighed regarding cost analysis, practicality of install, material availability, longevity, maintenance requirements, and effective resolution of cause. The choices were do nothing (no resolution), permanent vegetative cover (not practical for crop business), and reduced tillage.

Funding Information

| High Bid & Contractor Name | Low Bid & Contractor Name | Cost Share % | Funding Amount |
|----------------------------|---------------------------|--------------|----------------|
| \$2393.00 | Enter L Bid. | 75% | \$1794.75 |

| | | | |
|--------------------------|---|----------------------------------|------------|
| Final Invoice (s) | \$2,393.00 | Cost Share Payment Amount | \$1,794.75 |
| Funding Source | FY24 Mississippi Brainerd WBIF FY & Grant Name. | FY & Grant Name. | |

Add notes if needed.

Reductions

| | Before | After | Reduction Notes |
|--------------|------------|------------|---|
| Sediment/TSS | 6.8 ton/ac | 3.7 ton/ac | WEPS erosion prediction calculator estimated that 63.24 tons of soil will be saved over a 2-year rotation of corn silage and cereal rye with the use of a cover crop. |





**Cover Crop was
planted on 9/24/25.
Cover Crop was
certified on
10/14/2025.**





Jacob Colby Cover Crop Payout

Location Information

Parcel Number 23-0000300
 Township Name Stowe Prairie
 TWP, Range, Section 133, 35, 1
 Red Eye
 Minor Watershed HUC 12 County Ditch No
 5

Project Information

Project Type Ecological
 Practice Types Cover Crop
 Project Codes 340
 Field Technicians Alyssa Scheve
 Engineering Assistance enter name

POA Targeted Initiative: **Soil Profiles: Protect Land Productivity with Effective Soil and Nutrient Management**

Resource Concern and Project Purpose Description

Planting of a Winter Cereal Rye cover crop after soybean harvest 82 acres to reduce soil erosion and build soil health. Ground will be disked once to prepare seed bed and planted with a drill.

Funding Information

| High Bid & Contractor Name | Low Bid & Contractor Name | Cost Share % | Funding Amount |
|----------------------------|---------------------------|--------------|----------------|
| Enter H Bid. | \$4,407.40 | 75% | \$3,305.55 |

| | | | |
|--------------------------|----------------------|----------------------------------|-------------------|
| Final Invoice (s) | \$4,682.40 | Cost Share Payment Amount | \$3,511.80 |
| Funding Source | C25-0118 Red Eye 3.0 | | |

Landowner needed to purchase additional bushels of winter cereal rye for seeding his cover crop.

Reductions

| | Before | After | Reduction Notes |
|----------------|---------------|----------|-------------------------------|
| COD | # or NA. | # or NA. | MPCA Watershed Pollutant Load |
| Nitrogen | 127.1 lbs/yr | # or NA. | Reduction Calculator Used |
| Fecal Coliform | # or NA. | # or NA. | |
| BOD | # or NA | # or NA | |
| Sediment/TSS | 1.105 tons/yr | #or NA | |
| Phosphorus | 7.821 lbs/yr | # or NA. | |

Todd SWCD Mission Statement: Conservation, Protection, and Enhancement of Todd County's Natural Resources

Colby Cover Crop Payout, submitted by Alyssa Scheve on 11/6/2025.



Todd SWCD Mission Statement: Conservation, Protection, and Enhancement of Todd County's Natural Resources

Colby Cover Crop Payout, submitted by Alyssa Scheve on 11/6/2025.



**Cover Crop was planted
10/6/2025.**

**Cover Crop was certified on
10/14/2025.**

Todd SWCD Mission Statement: Conservation, Protection, and Enhancement of Todd County's Natural Resources

Colby Cover Crop Payout, submitted by Alyssa Scheve on 11/6/2025.



Jacob Colby Cover Crop Payout

Location Information

Parcel Number 23-0001000
 Township Name Stowe Prairie
 TWP, Range, Section 133, 35, 2
 Red Eye
 Minor Watershed HUC 12 County Ditch No
 5

Project Information

Project Type Ecological
 Practice Types Cover Crop
 Project Codes 340
 Field Technicians Alyssa Scheve
 Engineering Assistance enter name

POA Targeted Initiative: **Soil Profiles: Protect Land Productivity with Effective Soil and Nutrient Management**

Resource Concern and Project Purpose Description

Planting of a Winter Cereal Rye, turnips and radish cover crop after oat hay on 17.5 acres to reduce soil erosion and build soil health. Ground will be disked once to prepare seed bed and planted with a drill.

Funding Information

| High Bid & Contractor Name | Low Bid & Contractor Name | Cost Share % | Funding Amount |
|----------------------------|---------------------------|--------------|----------------|
| Enter H Bid. | \$1160.00 | 75% | \$870.00 |

| | | | |
|--------------------------|----------------------|----------------------------------|----------|
| Final Invoice (s) | \$1160.00 | Cost Share Payment Amount | \$870.00 |
| Funding Source | C25-0118 Red Eye 3.0 | | |

Reductions

| | Before | After | Reduction Notes |
|----------------|---------------|----------|--|
| COD | # or NA. | # or NA. | MPCA Watershed Pollutant Load Reduction Calculator Used |
| Nitrogen | 127.1 lbs/yr | # or NA. | |
| Fecal Coliform | # or NA. | # or NA. | |
| BOD | # or NA | # or NA | |
| Sediment/TSS | 1.105 tons/yr | #or NA | |
| Phosphorus | 7.821 lbs/yr | # or NA. | |

Todd SWCD Mission Statement: Conservation, Protection, and Enhancement of Todd County's Natural Resources

Colby Cover Crop Payout, submitted by Alyssa Scheve on 11/6/2025.



Todd SWCD Mission Statement: Conservation, Protection, and Enhancement of Todd County's Natural Resources

Colby Cover Crop Payout, submitted by Alyssa Scheve on 11/6/2025.



**Cover Crop was planted
9/13/2025. Cover Crop was
certified on 10/14/2025.**

Todd SWCD Mission Statement: Conservation, Protection, and Enhancement of Todd County's Natural Resources

Colby Cover Crop Payout, submitted by Alyssa Scheve on 11/6/2025.

Birchdale TWP Outlet Stabilization Payout

| Location Information | | Project Information | |
|----------------------|------------------|------------------------|-----------------------|
| Parcel Number | NA- Alcott Drive | Project Type | Engineered |
| Township Name | Birchdale | Practice Types | Underground Outlet |
| TWP, Range, Section | 127-34-Sect. 14 | Project Codes | 620 |
| Major Watershed | Sauk River | Field Technicians | Anton |
| Minor Watershed | 16034 Sauk Lake | Engineering Assistance | Widseth/ WCTSA |

POA Targeted Initiative: **Hard Surfaces, More Water: Protect Surface Waters through Cost-share Practices**

Resource Concern and Project Purpose Description

Alcott Drive is an impervious roadway adjacent to the shoreline of Sauk Lake. The lake is impaired for sediment loading and phosphorus. Stormwater flows off the road to ditches that have recently been reshaped (2024). New transfer pipes under the road will be installed and with that, a restriction to the flow of water is created, increasing velocities and erosion at the outlet. This project will provide stable outlets to disperse energy across the rocks to reduce erosion and allow for settling of materials before it reaches the lake. All culverts outlet, lakeside.

Alternative Conservation or Management Practice(s) Considered

Alternative solutions were weighed regarding cost analysis, practicality of install, material availability, longevity, maintenance requirements, and effective resolution of cause. Due to costs of the project, the township was less likely to install the proper armor and stabilization needed for the volume of water in spring melts and heavy storms.

Funding Information

| High Bid & Contractor Name | Cost Share % | Funding Amount |
|--|--------------|----------------|
| \$37,600 by MBC Drainage- already contracted for other road work | 67% | \$25,124.78 |

| | | | |
|--------------------------|-----------------------------------|----------------------------------|---------------------------------|
| Final Invoice (s) | \$37,600 | Cost Share Payment Amount | \$25,124.78 |
| Funding Source | FY24 State CC FY & Grant Name. | | \$25,124.78 FY & Grant Name. |

This project will close out this grant.

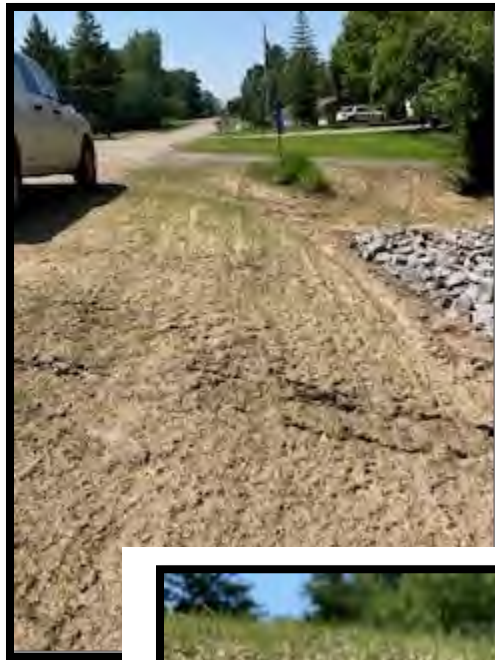
Reductions

| | After | Reduction Notes: |
|--------------|----------------|-----------------------|
| Sediment/TSS | 9.72 Tons/year | |
| Phosphorus | 8.27 lbs/year | BWSR Stream and Ditch |

See attached.

Todd SWCD Mission Statement: Conservation, Protection, and Enhancement of Todd County's Natural Resources

Birchdale Alcott Drive Stabilization along Sauk Lake. Presented for Pay out, November 13, 2025 by Deja Anton



Todd SWCD Mission Statement: Conservation, Protection, and Enhancement of Todd County's Natural Resources

Birchdale Alcott Drive Stabilization along Sauk Lake. Presented for Pay out, November 13, 2025 by Deja Anton



Hauer Pit Closure

Location Information

Parcel Number 07-0026100
 Township Name Eagle Valley
 TWP, Range, Section 131-34-22
 Major Watershed Long Prairie
 Minor Watershed 14046- Eagle Creek
 Enter Project Coordinates 46.145245

Project Information

Project Type Engineered
 Practice Types Ag Waste Impoundment
 Project Codes 313
 Field Technicians Anton
 Engineering Assistance Dylan Pratt
 -94.945141

POA Targeted Initiative: **Hard Surfaces, More Water: Protect Surface Waters through Cost-share Practices**

Resource Concern and Project Purpose Description

Two stage pit without certified liner needs to be closed to protect groundwater and surface water interface. The pit is 484' from a Type 3 Marsh and 535' from a tributary to Eagle Creek impaired by E. coli.

Alternative Conservation or Management Practice(s) Considered

Alternative solutions were weighed regarding cost analysis, practicality of install, material availability, longevity, maintenance requirements, and effective resolution of cause. Doing nothing would allow contamination concerns to be ongoing. The cost of rebuilding the pit is not practical to the farmer. He has moved to beef where the manure is more solid and may be pursuing a stacking slab in the future.

Funding Information

| High Bid & Contractor Name | Low Bid & Contractor Name | Cost Share % | Encumber Amount |
|-------------------------------|---------------------------|--------------|-----------------|
| Mid- Minn Excavating \$33,250 | Iron Cactus \$28,710 | 75% | \$21,532.50 |

| Final Invoice (s) | TBD | Cost Share Payment Amount | TBD |
|-------------------|------------------|---------------------------|-----|
| | C25 LP WBIF | TBD | |
| Funding Source | Landowner Amount | TBD | |

Working with P & Z on bin site construction and found this needs to be closed.

Reductions

Nitrogen 11 mg/L Todd E. coli Reduction calculator
Todd SWCD Mission Statement: Conservation, Protection, and Enhancement of Todd County's Natural Resources

Hauer Pit Closure Completion for Pay Out submitted by Deja Anton for November 13, 2025



SWCD

Fecal Coliform 3.89E + 15

Phosphorus NA

Aerial Map of Project



Construction Shots -Contract expiration date: 11/1/2025

October 31, 2025- 4:30 pm



November 1, 2025- 6:30 pm-7:15 pm

Todd SWCD Mission Statement: Conservation, Protection, and Enhancement of Todd County's Natural Resources

Hauer Pit Closure Completion for Pay Out submitted by Deja Anton for November 13, 2025



November 1, 2025 10:17 pm

Todd SWCD Mission Statement: Conservation, Protection, and Enhancement of Todd County's Natural Resources

Hauer Pit Closure Completion for Pay Out submitted by Deja Anton for November 13, 2025



Success with 1 hour and 43 minutes to spare.

This will be topped with gravel for driveway and future stacking slab pad

Todd SWCD Mission Statement: Conservation, Protection, and Enhancement of Todd County's Natural Resources

Hauer Pit Closure Completion for Pay Out submitted by Deja Anton for November 13, 2025

Goodwin Field Erosion

Location Information

Parcel Number 05-0012900
Township Name Burleene
TWP, Range, Section 130/35/18
Major Watershed Long Prairie
Minor Watershed 14015-Eagle Cr

Project Information

Project Type Engineered
Practice Types WASCOB
Project Codes 638
Field Technicians Pratt
Engineering Assistance NRCS and WCTSA

POA Targeted Initiative: **Hard Surfaces, More Water: Protect Surface Waters through Cost-share Practices**

Resource Concern and Project Purpose Description

Installation of 5 WASCOBs to reduce gully erosion and reduce field runoff to a road ditch that connects to an intermittent stream.

Alternative Conservation or Management Practice(s) Considered

Alternative solutions were weighed regarding cost analysis, practicality of install, material availability, longevity, maintenance requirements, and effective resolution of cause. Options include not addressing field erosion and continuing to “band aid” the field each year after sediment loss with further expense to the county for ditch clean- out and repeated deposition into surface water, A second option was a grassed waterway but slopes do not allow this to be considered a successful practice to properly address this magnitude of erosion.

Latitude 46°04'28.7"N

Longitude 95°08'32.2"W

Funding Information

Engineers Estimate
\$134,409.00

Cost Share % Funding Amount
69.7% \$93,799.48

Final Invoice (s) Enter final Cost. **Cost Share Payment Amount** Enter final Payment.

Funding Source C23-3483 Long Prairie WBIF Enter \$\$ Amount
FY & Grant Name. FY & Grant Name.

Add notes if needed.

Reductions

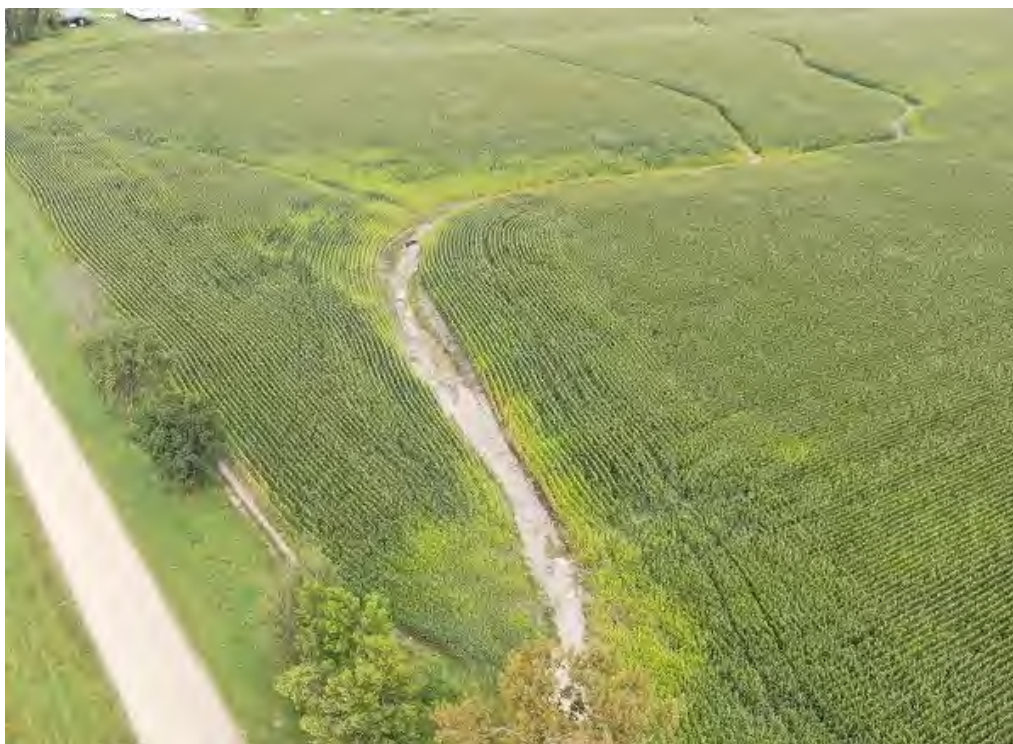
Nitrogen 96.72 lbs/yr
Sediment/TSS .7686 tons/yr
Phosphorus 16.76 lbs/yr

Reduction Notes

MPCA Watershed Pollutant Load Reduction Calculator used. Acres treated by new BMPs equals 50.

Todd SWCD Mission Statement: Conservation, Protection, and Enhancement of Todd County's Natural Resources

Goodwin Field Erosion Encumbering submitted by: Dylan Pratt 2025.10.9



Todd SWCD Mission Statement: Conservation, Protection, and Enhancement of Todd County's Natural Resources

Goodwin Field Erosion Encumbering submitted by: Dylan Pratt 2025.10.9



Todd SWCD Mission Statement: Conservation, Protection, and Enhancement of Todd County's Natural Resources

Goodwin Field Erosion Encumbering submitted by: Dylan Pratt 2025.10.9



Todd SWCD Mission Statement: Conservation, Protection, and Enhancement of Todd County's Natural Resources

Goodwin Field Erosion Encumbering submitted by: Dylan Pratt 2025.10.9



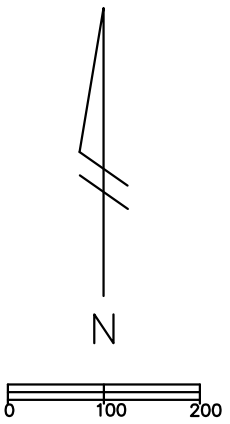
Todd SWCD Mission Statement: Conservation, Protection, and Enhancement of Todd County's Natural Resources

Goodwin Field Erosion Encumbering submitted by: Dylan Pratt 2025.10.9



Todd SWCD Mission Statement: Conservation, Protection, and Enhancement of Todd County's Natural Resources

Goodwin Field Erosion Encumbering submitted by: Dylan Pratt 2025.10.9

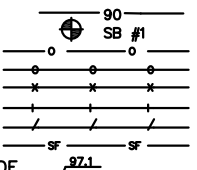


- CONSTRUCTION NOTES:
- TILE LINES ARE OFFSET FROM CENTERLINE DRAW.
 - SALVAGE & RESPREAD TOPSOIL FROM CONSTRUCTION AREAS PRIOR TO PLACING ANY FILL.
 - GRADING & SHAPING ALONG TOE SLOPE MAY BE REQUIRED TO PROVIDE POSITIVE DRAINAGE TO INTAKES.
 - EXISTING TILE LINES SHOULD BE LOCATED PRIOR TO CONSTRUCTION TO AVOID DAMAGE.
 - SWCD/TSA IS NOT RESPONSIBLE FOR LOCATING OR DAMAGE TO EXISTING TILE LINES.
 - SEED, FERTILIZE, & MULCH WATER & SEDIMENT CONTROL BASINS.
 - INSTALL 6" DIA. CPT SUPPORT TILE ALONG TOE OF BERM AS NOTED

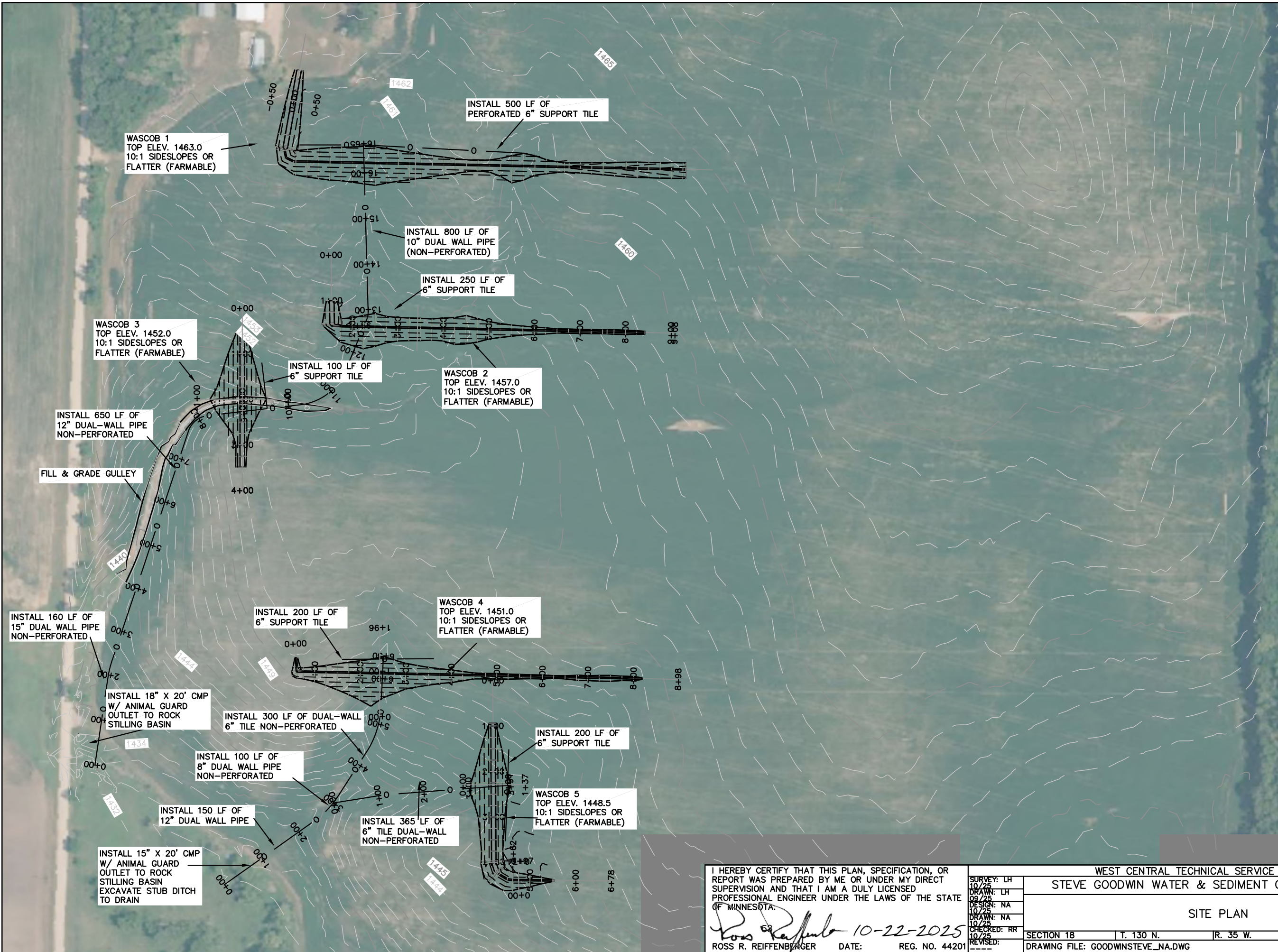
BASINS ARE LOCATED BASED ON A 40' WIDE PLANTER SPACING AND SPACED ON BASIN CENTERLINE

LEGEND

- CONTOUR ELEVATION
- SOIL BORING
- PROPOSED TILE
- EXISTING TILE
- EXISTING FENCE
- PROPOSED FENCE
- DIVERSION
- SILT FENCE
- EXISTING/PROPOSED GRADE



| | | | | |
|--|--|---|--------------------|-------------------|
| I HEREBY CERTIFY THAT THIS PLAN, SPECIFICATION, OR REPORT WAS PREPARED BY ME OR UNDER MY DIRECT SUPERVISION AND THAT I AM A DULY LICENSED PROFESSIONAL ENGINEER UNDER THE LAWS OF THE STATE OF MINNESOTA. <i>Ross R. Reiffenberger</i> 10-22-2025 ROSS R. REIFFENBERGER DATE: REG. NO. 44201 | | WEST CENTRAL TECHNICAL SERVICE AREA (WCTSA) | | |
| | | STEVE GOODWIN WATER & SEDIMENT CONTROL BASINS | | |
| | | SITE PLAN | | |
| | | SECTION 18 | T. 130 N. R. 35 W. | TODD COUNTY |
| | | DRAWING FILE: GOODWINSTEVE_NA.DWG | | PLAN SHEET 2 OF 9 |



**AMENDMENT TO CROW WING RIVER
COMPREHENSIVE WATERSHED MANAGEMENT PLAN
IMPLEMENTATION AGREEMENT**

MEMORANDUM OF AGREEMENT

This agreement (Agreement) is made and entered into between:

The Counties of Becker, Cass, Crow Wing, Hubbard, Todd, and Wadena by and through their respective County Board of Commissioners, and
The Becker, Cass, Crow Wing, Hubbard, Todd, and Wadena Soil and Water Conservation Districts, by and through their respective Soil and Water Conservation District Board of Supervisors, and
The White Earth Band of the Minnesota Chippewa Tribe, White Earth Nation (WEN), by and through its Division of Natural Resources (WEDNR);
Collectively referred to as the "Parties."

WHEREAS, the Counties of this Agreement are political subdivisions of the State of Minnesota, with authority to carry out environmental programs and land use controls, pursuant to Minnesota Statutes Chapter 375 and as otherwise provided by law; and

WHEREAS, the Soil and Water Conservation Districts (SWCDs) of this Agreement are political subdivisions of the State of Minnesota, with statutory authority to carry out erosion control and other soil and water conservation programs, pursuant to Minnesota Statutes Chapter 103C and as otherwise provided by law; and

WHEREAS, the WEN is a federally recognized Indian Tribe with inherent authority to carry out environmental programs and land use controls, and pursuant to Minnesota Statutes Section 471.59, WEN is considered a "local government unit" to enter into joint powers agreements with state governmental units; and

WHEREAS, the Parties to this Agreement have a common interest and statutory authority or Tribal Council directive pursuant to Resolution No. 057-24-030 to assure implementation of a comprehensive watershed management plan in the Crow Wing River Watershed to conserve soil and water resources through the practices, programs, and regulatory controls that effectively control or prevent erosion, sedimentation, siltation and related pollution in order to preserve natural resources, ensure continued soil productivity, protect water quality, reduce damages caused by floods, preserve wildlife, protect the tax base, and protect public lands and waters; and

WHEREAS, with matters that relate to the coordination of water management authorities pursuant to Minnesota Statutes Chapters 103B, 103C, and 103D with public drainage systems pursuant to Minnesota Statutes Chapters 103E, this Agreement does not change the rights or obligations of the public drainage system authorities; and

WHEREAS, the Parties have formed this Agreement for the specific goal of implementing the Crow Wing River Comprehensive Watershed Management Plan, which was developed pursuant to Minnesota Statutes § 103B.801, Comprehensive Watershed Management Planning, also known as *One Watershed, One Plan*.

NOW, THEREFORE, the Parties hereto agree as follows:

1. **Purpose:** The Parties to this Agreement recognize the importance of partnerships to plan and implement protection and restoration efforts for the Crow Wing River Watershed (*See Attachment A: Implementation Area Map*). The purpose of this Agreement is to collectively implement, as local government units, the Crow Wing River Comprehensive Watershed Management Plan. Parties signing this agreement will be collectively referred to as the Crow Wing River Watershed Collaboration, partnering together in this Agreement as an exercise of joint powers under Minn. Stat. Section 471.59.
2. **Term:** This Agreement is effective upon signature of all Parties in consideration of the Board of Water and Soil Resources (BWSR) Participation Requirements for participation in Watershed Based Implementation Funding; and will remain in effect until cancelled according to the provisions of this Agreement, unless earlier terminated by law. This Agreement end date will run concurrent with the BWSR grant agreement end date of December 2033. Parties may revisit the grant agreement end date and make extensions to the term of the grant agreement if agreed upon by the Policy Committee (the structure, membership, and governing provisions of the Policy Committee are described in a later paragraph in this Agreement).
3. **Adding Additional Parties:** A qualifying party within the Crow Wing River Comprehensive Watershed Management Plan Area that is responsible for water planning and resource management according to Minnesota State Statutes desiring to become a member of this Agreement shall indicate its intent by adoption of a governing board resolution. The Resolution shall be mailed to the existing Policy Committee, and upon receipt by the Policy Committee, the qualifying party shall become a member of the Policy Committee. The qualifying party agrees to abide by the terms and conditions of this Agreement, including but not limited to the bylaws, policies and procedures adopted by the Policy Committee.
4. **Withdrawal of Parties:** A party desiring to leave this Agreement shall indicate its intent in writing to the Policy Committee in the form of an official board resolution. Notice must be made at least 30 days in advance of leaving the Agreement.
5. **General Provisions:**
 - a. **Compliance with Laws/Standards:** The Parties agree to abide by all federal, state, and local laws including Tribal laws; statutes, ordinances, rules, and regulations now in effect or hereafter adopted pertaining to this Agreement or to the facilities, programs, and staff for which the Agreement is responsible. All Parties to this Agreement will be given the option to opt out within 30 days after new federal, state or local laws including Tribal laws, statutes, ordinances, rules, and regulations are adopted and become effective, which increase or decrease the responsibilities of the Parties pertaining to this Agreement.
 - b. **Sovereignty of the White Earth Nation:** The Parties to this Agreement agree to respect the sovereignty of the White Earth Nation over its lands and waters and acknowledge as a sovereign some of the State of Minnesota's statutes, ordinances, rules, or regulations may not apply to the actions of WEN staff or Tribal members.
 - c. **Indemnification:** Each party to this Agreement shall be liable for the acts of its officers, employees or agents and the results thereof to the extent authorized or limited by law and shall not be responsible for the acts of any other party, its officers, employees, or agents.

The provisions of the Municipal Tort Claims Act, Minnesota Statute Chapter 466, and other applicable laws govern the liability of all the Parties, except the WEN. To the full extent permitted by law, actions by the Parties, their respective officers, employees and agents, pursuant to this Agreement, are intended to be and shall be construed as a "cooperative

activity". It is the intent of the Parties that they shall be deemed a "single governmental unit" for the purpose of liability, as set forth in Minnesota Statutes § 471.59, subd. 1a(a). For purposes of Minnesota Statutes § 471.59, subd. 1a(a) it is the intent of each party that this Agreement does not create any liability or exposure of one party for the acts or omissions of any other party.

The Parties acknowledge that WEN is not subject to the protections or provisions of the Minnesota statutes referenced within this subsection 5(b) of the Agreement. It is not WEN's intent by entering this Agreement to create any liability or exposure of one party for the acts or omissions of any other party to the Agreement. WEN employees may be protected from personal liability under the Federal Torts Claims Act (28 U.S.C. Part VI, Chapter 171 and U.S.C. Section 1346) and any indemnification provisions provided under WEN Tribal codes.

- d. **Records Retention and Data Practices:** The Parties agree that records created pursuant to the terms of this Agreement will be retained in a manner that meets their respective entity's records retention schedules that have been reviewed and approved by the State in accordance with Minnesota Statutes §138.17, with the exception of WEN because WEN's records are not subject to review or approval by the State. The Parties further agree that records prepared or maintained in pursuant to the terms of this Agreement shall be subject to the Minnesota Government Data Practices Act unless otherwise exempted by state or federal laws. At the time this Agreement expires, all records will be turned over to the Fiscal Agent unless otherwise exempted by state or federal laws.
- e. **Timeliness:** The Parties agree to perform obligations under this Agreement in a timely manner and keep each other informed about any delays that may occur.
- f. **Termination:** The Parties anticipate that this Agreement will remain in full force and effect through the term of the grant agreement with BWSR, unless otherwise terminated in accordance with law or other provisions of this Agreement. The Parties acknowledge their respective and applicable obligations, if any, under Minnesota Statute §471.59, Subd. 5 after the purpose of the Agreement has been completed, unless Parties otherwise agree in writing for disposition of any property acquired as a result of this Agreement.
- g. **Extension:** The Parties may extend the termination date of this Agreement for the purposes of implementation the plan beyond the BWSR grant planning phase identified in Section 2 as agreed upon unanimously by the Parties to this Agreement.

6. Administration:

- a. **Establishment of a Policy Committee and Advisory Committee for Implementation of the Crow Wing River Comprehensive Water Management Plan.** The Parties hereto agree to designate one representative, who must be an elected or appointed member of their governing board, to a Policy Committee for implementation of the Crow Wing River Comprehensive Water Management Plan. The Policy Committee will meet as needed to implement and decide on the content of the work plan.
 - i. Each representative shall have one vote and shall have the authority to act on behalf of their Board regarding mentioned items, grant agreement(s) and amendment(s), interim report review and approval, payments under the grant, professional contracts, and voting on the recommended work plan.

ii. The Policy Committee member will serve as a liaison to their respective boards. Each governing board may choose one alternate to serve on the Policy Committee as needed in the absence of the designated member.

iii. An Advisory Committee will be established to provide technical support on the plan content and Implementation to the Policy Committee, including identification of priorities. The Advisory Committee will be comprised of the Steering Committee, stakeholders, the state's main water agencies, and/or plan review agencies. The Advisory Committee will meet as needed.

iv. A Steering Committee will be established consisting of local staff, county staff, and SWCD staff for the purposes of logistical and day-to-day decision-making in the Implementation process. The Steering Committee will meet as needed.

7. Fiscal Agent agrees to:

- a. Accept all responsibilities associated with implementing the BWSR grant agreement for developing a watershed-based implementation workplan and sign the grant agreement on behalf of the Parties listed within.
- b. Perform financial transactions as part of the grant agreement and contract implementation.
- c. Pursuant to Minn. Stat. Section 471.59, Subd. 3, strict accountability of all funds and report of all receipts and disbursements and annually provide a full and complete audit report.
- d. Responsible for fiscal records retention consistent with the agent's records retention schedule.

8. Grant Administrator agrees to:

- a. Accept all day-to-day responsibilities associated with implementing the BWSR grant agreement for watershed-based implementation grant funds.
- b. Provide the Policy Committee with the records necessary to describe the financial condition of the BWSR grant agreement.
- c. Be the Day-to-Day Contact for the Crow Wing River Comprehensive Water Management Implementation Plan.
- d. Responsible for the BWSR reporting requirements (E-link).

9. The Plan Coordinator agrees to:

- a. Host the Crow Wing River Comprehensive Watershed Management Plan
- b. Provide a note-taker for all Policy, Advisory, and Steering Committee meetings. Prepare and distribute those notes to the appropriate committees.
- c. Assist the Chair of the Policy Committee with providing an agenda for upcoming meetings.
- d. Notify all committees of upcoming meetings through email and/or phone calls.
- e. May, with the Agreement and consent of the Fiscal Agent, assign any of the foregoing services

to the Fiscal Agent who shall perform the services it accepts.

In the event of a vacancy in the above-listed roles, the party responsible for the role will determine if there is adequate capacity within the organization to fulfill the listed role. If the partner agency determines they no longer have capacity and would like to relinquish their duties, they must inform the Policy Committee. The Policy Committee will then reassign the service to another party with the capacity to fulfill the grant agreement.

10. Authorized Representatives: The following persons will be the primary contacts for all matters concerning this Agreement:

Becker County
Kyle Vareberg or Successor Planning and
Zoning Administrator 915 Lake Ave
Detroit Lakes, MN 56501
218-846-7314

Becker SWCD
Bryan Malone or Successor District
Administrator
809 8th St SE
Detroit Lakes, MN 56501
218-846-7360

Cass County
Jeff Woodford or Successor Environmental
Services Director PO Box 3000
Walker, MN 56484
218-547-7428

Cass SWCD
Dana Gutzmann or Successor Conservation
Manager
PO Box 3000
Walker, MN 56484
218-547-7246

Crow Wing County
Chris Pence or Successor Environmental
Services Manager 322 Laurel St., Suite 15
Brainerd, MN 56401

Crow Wing SWCD
Melissa Barrick or Successor District
Manager
322 Laurel St., Suite 22
Brainerd, MN 56401
218-828-6197

Hubbard County
Eric Buitenwerf or Successor Government
Center - 2nd Floor 301 Court Avenue
Park Rapids, MN 56470

Hubbard SWCD
Crystal Mathisrud or Successor District
Manager
603 North Central Ave, Suite 100 Park
Rapids, MN 56470

Wadena County
Deana Malone or Successor Planning and
Zoning Administrator 415 Jefferson Street S
Room 234 Courthouse
Wadena, MN 56482

Wadena SWCD
Darren Newville or Successor
District Manager
4 Alfred St NE Wadena, MN
56482

Todd County
Adam Ossefoort or Successor SWCD/Planning
& Zoning Division Director
215 1st Ave. S Suite 103 Long
Prairie, MN
320-732-4420

Todd SWCD
Deja Anton or Successor District
Manager 2151st Ave. S Suite 104,
Long Prairie, MN
320-732-2644

White Earth Nation
Dustin Roy or Jessica Johnson
Divisional Director or Director
White Earth Division of Natural Resources
102 3rd Street NE
Mahnomen, MN 56557
218-983-4649

